

LUCAS COUNTY

Active Transportation Plan



TABLE OF CONTENTS

Acknowledgements	2
Executive Summary	4
Chapter 1 Introduction	10
Active Transportation	10
Planning Process	11
Vision & Goals	13
Chapter 2 Existing Conditions	14
Walk.Bike.Ohio Analyses	14
Existing Plans & Policies	18
Existing & Planned Infrastructure	20
Existing Programs	22
Summary of Existing Conditions	23
Chapter 3 Community Engagement	24
Strategies	24
Survey Respondents	28
What We Heard	31
Putting It All Together	34
Chapter 4 Recommendations	35
Proposed Bicycle Network	35
Pedestrian Infrastructure	46
Program Recommendations	50
Chapter 5 Implementation	58
Project Prioritization	58
Demonstration Projects	60
Funding Strategies	61
Performance Measures	63
Adopting and Updating the Plan	67
Appendix	68

ACKNOWLEDGEMENTS

ACTIVE TRANSPORTATION STEERING COMMITTEE

Name	Organization	Name	Organization
Dawn Bentley	The Ability Center of Greater Toledo	Kim Baker	City of Toledo
Veralucia Mendoza	The Ability Center of Greater Toledo	Nicole Knepper	Mercy Health
Katie Shelley	The Ability Center of Greater Toledo	Allen Gallant	Metroparks
Jordan Justice	Bicycle Advocate	Ruth Griffin	Metroparks
Gary Arbuckle	Lucas County Board of Developmental Disabilities	Ryan Vollrath	Ohio Department of Health
Rodney Shultz	City of Oregon	Chris Waterfield	Ohio Department of Transportation
Stephanie Bartlett	City of Toledo	Dan Marsalek	The Olander Park System
Katie Cappellini	City of Sylvania	Paulette Mills	Poggemeyer Design Group
Naveen Chandra	City of Toledo	Michael Szuberla	ProMedica
Steve Day	City of Toledo	Jim	Reggie's Bike Shop
Nancy Hirsch	City of Toledo	Gina Veres	Safe Kids Greater Toledo
Babar Stelzer	City of Toledo	Jenny Hansen	Safe Routes to School
Gary Stookey	City of Toledo	Melissa Greene	Toledo-Lucas County Sustainability Commission
Ron Myers	Lucas County Engineer	Hopfer	Toledo-Lucas County Sustainability Commission
Amy Abodeely	Creating Healthy Communities	Rachel Tippett	TARTA
Julie Thomas	CT Consultants	Daniel Hunt	TMACOG
Melissa Lanier	Toledo-Lucas County Health Department	Lance Dasher	Toledo Area Bicyclists
Darla Fanelli	The JDI Group	Dan Becker	Toledo Bikes
Mark Reiter	Lucas County	Steve Atkinson	Greater Toledo Community Foundation
Michael Veh	Lucas County	Patrick Johnston	Toledo Fire
Jessica Wilbarger	Lucas County Traffic Safety Program	Gwen Haynes-Burel	Toledo Police
Natalie Zerucha	MacPherson Architects	William Windnagle	University of Toledo
Jaimie Deye	MacPherson Architects	Andrea Masters	We Are Traffic
Kate MacPherson	MacPherson Architects	Keith Webb	YMCA of Greater Toledo and Live Well Greater Toledo
		Beth Deakins	
		Angela Holm	

OTHER PARTNERS

Toole Design

SPONSORS

Ohio Department of Health
Toledo-Lucas County Health Department
YMCA of Greater Toledo
Live Well Greater Toledo

Information contained in this document is for planning purposes and should not be used for final design of any project. All results, recommendations, concept drawings, cost opinions, and commentary contained herein are based on limited data and information and on existing conditions that are subject to change. Existing conditions have not been field-verified. Further analysis and engineering design are necessary prior to implementing any of the recommendations contained herein.

EXECUTIVE SUMMARY



DECEMBER 2022



WHAT IS ACTIVE TRANSPORTATION AND WHY IS IT IMPORTANT?

“Active Transportation” is an umbrella term for all the ways people can get around without using a motorized vehicle - walking or cycling, using mobility assistance devices (such as wheelchairs and scooters), skating or skateboarding, and more. In short, active transportation is human-powered travel. Many Ohioans access transit, work, school, retail stores or any number of destinations in urban, suburban, and rural settings by active transportation. Active transportation can provide many community benefits beyond personal mobility, such as improved public health, economic development, greater quality of life, and enhanced environmental quality.

Active transportation planning involves community engagement specific to the needs of people who walk and cycle as well as outlines the vision, goals, and strategies needed to support safe, convenient, and accessible active transportation options. It is important and beneficial to meet the needs of people walking and cycling by planning for and directing investments in infrastructure and programs that support active transportation options.



BENEFITS OF ACTIVE TRANSPORTATION

Physical Health

Increased opportunity for recreation and destination-oriented trips using active modes of travel are key to increasing daily physical activity and reducing the risk for developing preventable, chronic diseases.

Mental Health

Physical activity reduces depression, can improve the quality of sleep, and has been shown to improve cognitive function for older adults.¹ Active transportation can also improve social conditions in communities, which contributes to positive mental well-being among residents.

Economic Development

There is broad consensus across the country, and in Ohio, that investing in active transportation produces a positive return on investment for host communities. This is especially true when it comes to trails, which serve as major regional attractions for recreational riders.

Quality of Life

Comfortable and accessible options for cycling and walking provide a host of quality-of-life benefits. They increase the number of travel options for everyone and can lead to greater independence for older residents, young people, and others who cannot or choose not to drive. Providing a high-quality active transportation network is especially important for the mobility of community members who do not have full access to a vehicle.

Environmental Quality

Shifting to cycling and walking trips and concentrating development in dense walkable and bikeable communities can reduce transportation-based emissions and sprawling land use that impacts the natural environment.²

1. U.S. Department of Health and Human Services. 2008 PHYSICAL ACTIVITY GUIDELINES FOR AMERICANS. Washington, DC: U.S. Dept of Health and Human Services; 2008. <http://health.gov/paguidelines/pdf/paguide.pdf>

2. Federal Highway Administration, National Bicycling and Walking Study, "Case Study No. 15 The Environmental Benefits Of Bicycling And Walking," 1993 http://safety.fhwa.dot.gov/ped_bike/docs/case15.pdf

PLAN TIMELINE

The Lucas County Active Transportation Plan was created under the leadership of a Steering Committee, as well as a broad coalition of people over the years, which ensured that it represented the variety of interests and stakeholders in Lucas County. The planning process began in 2017 when a team from Lucas County attended the Action Institute. Co-hosted by the Ohio Department of Health and the Ohio Department of Transportation, the Action Institute was a two-day training and networking opportunity for Ohio cities, counties, or regions interested in making their communities safer and more accessible for walking, cycling, and transit. Since then, a Steering Committee led by Live Well Greater Toledo and the Toledo-Lucas County Health Department has helped develop the plan through regular meetings, community outreach, and working with an outside consultant.

2017

- The Health Department and Live Well Greater Toledo assembled a multi-disciplinary team and participated in the Ohio Action Institute.

2018

- The Lucas County team established a Steering Committee and developed active transportation initiatives.
- In the spring of 2018, a workshop hosted by Toole Design Group focused on "Best Practices in Active Transportation".
- An Active Transportation Steering Committee was established to develop active transportation initiatives.

2019

- During the summer of 2019 a second workshop hosted by Toole Design Group focused on the process of developing a county-wide Active Transportation Plan, vision, and goals.
- The Steering Committee continued to meet regularly, advance initiatives within their organizations, as well as share progress.

2020

- Toole Design performed an assessment of the active transportation planning work to date to identify next steps.
- The assessment identified a need for broader public engagement and a need for outside support to finish the plan.

2021

- The Toledo-Lucas County Health Department leveraged Building Resilient Communities (BRIC) funding to contract with Toole Design to complete the draft plan.
- The draft plan was completed in December 2021.

2022

- Plan is presented to decision makers for adoption.
- Steering Committee begins implementation.

VISION AND GOALS

The vision and plan goals presented here were developed collaboratively by the Steering Committee and guided the development of the plan recommendations. They are also central to evaluating plan implementation.

Vision: In 2040 Lucas County will be an accessible community where people of all ages and abilities, including children, can conveniently, comfortably, affordably, and safely walk, cycle, or use public transit as part of their everyday travel behaviors. There are four goal categories:

Health & Safety



Encourage the development of a safe and context-appropriate bikeway and pedestrian system for all users in Lucas County including special populations.

- Reduce the amount of vehicular traffic by providing opportunities to utilize alternative modes of transportation.
- Improve the overall well-being of Lucas County residents and minimize health care costs by promoting an active lifestyle that will serve to improve the resident's physical and mental health.
- Reduce the number and severity of crashes involving pedestrians and bicyclists.

Livability



Create a framework for a comprehensive, community-driven, transportation network for all users, of all ages.

- Increase opportunities for physical activity with well-designed sidewalks, on-street bicycle facilities, and multiuse trails.

Equity



Create a more accessible community for all through development of interconnected pedestrian and bicycle facilities.

- Increase connectivity of active transportation facilities to improve access to job opportunities, medical care, and local commercial services.

Sustainability



Reduce per capita energy consumption and promote alternative fuel resources to increase affordability and resilience of regional energy supplies.

EXISTING CONDITIONS

The project team completed an existing conditions analysis to understand the current transportation system and where improvements could be made for people walking and cycling.

- » The trail network is one of Lucas County’s key active transportation strengths, as trails are comfortable facilities for a wide range of bicyclists and pedestrians.
- » There are multiple existing active transportation education and encouragement programs within Lucas County such as two Safe Routes to School programs, Bike Month every May, the City of Toledo’s bikeshare program, etc.
- » Lucas County ranks in the bottom 25% of counties in Ohio for overall health outcomes.
- » For severe injury and fatal pedestrian crashes, Lucas County ranks higher than other counties with large cities.
- » Lucas County is the only county to rank in the top five for both pedestrian and bicycle crashes.

In addition, the project team reviewed volume and speed data as well as ODOT's Demand and Needs Analyses, which identified areas with strong potential for cycling and walking. The city of Toledo is both high demand and high need for pedestrian and bicycle infrastructure. See the Existing Conditions section for a summary of all analyses.

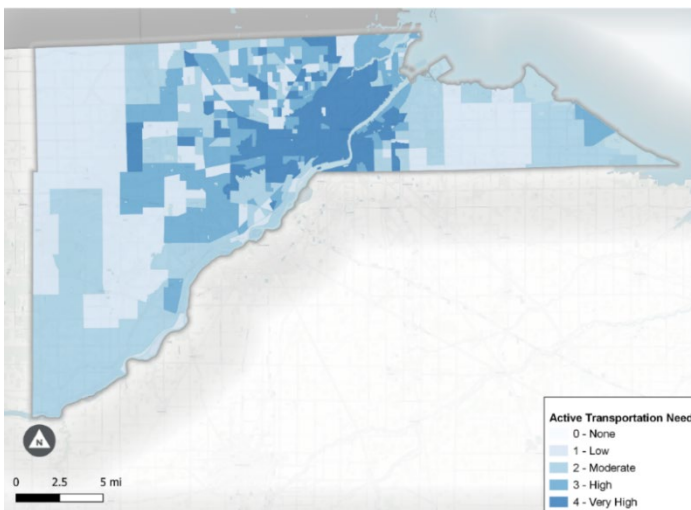


Figure 2: Composite Need Map. Darker areas have concentrations of populations with multiple demographic need indicators.

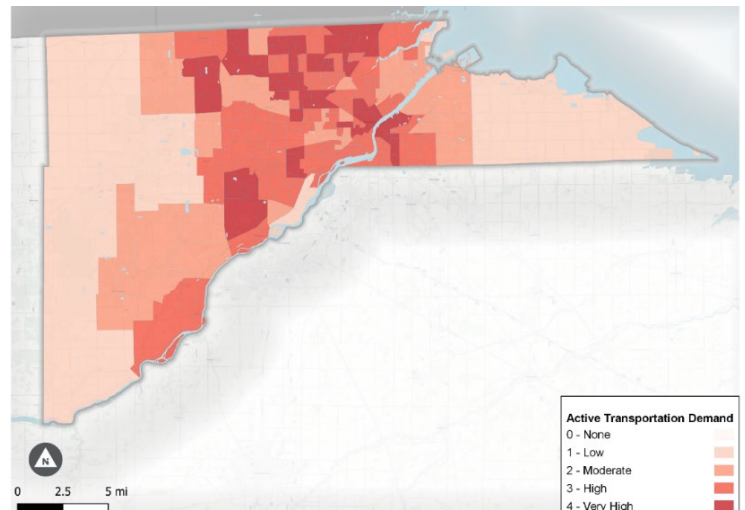


Figure 1: Composite Demand Map. Darker areas have greater demand for walking and cycling opportunities.

PUBLIC ENGAGEMENT

Public engagement was different than normal due to the COVID-19 pandemic. The project team collected community input online through a public survey, interactive mapping tool, and in-person tabling events at the TARTA transit center and county libraries. Early engagement identified key barriers to walking and cycling, which defined areas of focus for the planning process.

Table: Frequency of walking and biking for transportation

	How often do you WALK for transportation?	How often do you BIKE for transportation?
Most days	39%	21%
Once a week	12%	18%
Once a month	8%	10%
Less than once a month	42%	51%

PROPOSED PROJECTS AND PROGRAMS

The existing conditions analysis, public input, and steering committee meetings led to the final active transportation network. The proposed Active Transportation Plan routes include:

<p>47 miles</p> <p>Shared Use Paths</p> 	<p>5 miles</p> <p>Buffered or Separated Bicycle Lanes</p>	<p>21 miles</p> <p>Bicycle Lanes</p> 	<p>11 miles</p> <p>Bicycle Boulevards</p>	<p>20 miles</p> <p>Wide Shoulders</p> 
---	---	--	---	---

The plan also proposes establishing supportive programs such as educational campaigns, community support, policies, and data programs.

Safe System Approach

- » The Safe System Approach is a holistic method to eliminate fatal and serious injuries for all road users. The Need and Demand maps in Chapter 2 can inform where to make pedestrian infrastructure investments.

Pedestrian Toolkit

- » A few pedestrian safety treatments found in the toolkit include raised crosswalks, rectangular rapid flashing beacons, and pedestrian refuge islands.

Program Recommendations

- » A variety of programs and policies can help establish a culture of walking and cycling at all levels. Recommendations consist of education opportunities, policy implementations, community support, and data analysis and collection.

CHAPTER 1

INTRODUCTION



ACTIVE TRANSPORTATION

“Active Transportation” is an umbrella term for all the ways people can get around without using a motorized vehicle – walking, biking, using a kick scooter or skateboard, and more. It includes people who move around using mobility assistance devices such as wheelchairs and seated scooters. The term active transportation reinforces that these activities are valid forms of transportation enabling people to reach school, jobs, shopping, and other services, and not merely forms of recreation.

These physically active forms of transportation play a crucial role in improving community health and quality of life. Being able to walk, bike, or roll for transportation is important since a large proportion of the population who cannot drive or afford vehicular transportation—including children, people with disabilities, senior citizens, and low-income populations—depend on alternative modes of transportation. In addition, walking, biking, and rolling provide individuals with the many benefits of regular physical activity including better quality sleep, lower blood pressure, reduced anxiety, and stronger immune systems.¹ At the community level, widespread use of active transportation improves public health outcomes, reduces tailpipe emissions, and alleviates traffic congestion.

To obtain these benefits, communities must invest in the infrastructure and programs that support active transportation; developing an Active Transportation Plan is an important step towards coordinating that investment. Active transportation planning involves a comprehensive approach to the transportation system, recognizes the importance of active transportation in accessing public transit, and addresses associated infrastructure like bike racks and wheelchair ramps.

ABOUT LUCAS COUNTY

Lucas County is located in northwest Ohio bordered by Lake Erie to the east, the Maumee River to the south, and the state of Michigan to the north. The County encompasses approximately 341 square miles and has a population of 428,348.*

Within Lucas County there are five independent cities, three villages, and eleven townships. The City of Toledo is the county seat, and largest with a population of 272,778. Toledo is the fourth largest city in Ohio.

*Census Reporter.

<https://censusreporter.org/profiles/05000US39095-lucas-county-oh/>

¹ Centers for Disease Control and Prevention. “Health Benefits of Physical Activity for Adults.” <https://www.cdc.gov/physicalactivity/basics/adults/health-benefits-of-physical-activity-for-adults.html>

PLANNING PROCESS

The Toledo Lucas County Health Department and Live Well Greater Toledo led the development of this plan with input and support from the Active Transportation Steering Committee and Toole Design Group. This plan is the first county-wide Active Transportation Plan for Lucas County, but it builds on many previous planning efforts led by local jurisdictions, park systems, and the regional planning agency. The Steering Committee is made up of representatives from these organizations as well as advocates, non-profit organizations, Safe Routes to School programs, and large employers. A full list of members can be found in the Acknowledgements page at the beginning of the plan.

Timeline

2017 - The desire for a county-wide active transportation plan began in 2017 when the Health Department and Live Well Greater Toledo assembled a multi-disciplinary team and applied to participate in the Ohio Action Institute hosted by the Ohio Department of Transportation and the Ohio Department of Health. The Action Institute was a two-day training and networking opportunity for Ohio cities, counties, or regions interested in making their communities safer and more accessible for walking, bicycling, and transit.

2018 - Following the Action Institute, the Lucas County team established a Steering Committee that met regularly and worked to advance in active transportation initiatives in four areas: Education, Infrastructure, Plans and Policies, and Data and Evaluation.

The Health Department leveraged state contracts to bring in subject matter experts from Toole Design for additional local workshops. The first workshop took place in spring 2018. Titled "Best Practices in Active Transportation," the workshop brought the content of the Action Institute to a broader audience of local stakeholders, including elected officials. The workshop covered planning, policy, design, and an overview of current efforts.

2019 - A second workshop held in summer 2019 focused on the process of developing an Active Transportation Plan and included exercises to develop the plan's vision and goals. Steering Committee members continued to advance initiatives within their own organizations and met regularly to share progress.

2020 - Toole Design performed an assessment of the active transportation planning work to date and identified potential next steps. The assessment identified a need for broader public engagement in the planning process and a lack of capacity on the Steering Committee needed to finish the draft plan document.

2021 - Armed with the recommendations from the assessment memo, the Toledo-Lucas County Health Department leveraged Building Resilient Communities (BRIC) funding to contract with Toole Design to complete the draft plan. The draft plan was completed in December 2021.



Figure 3: Participants work in small groups during the 2018 workshop on best practices for active transportation.

VISION & GOALS

The active transportation vision and plan goals presented here were developed collaboratively by the Steering Committee and guided the development of the plan recommendations. They are central to evaluating plan implementation and metrics for each goal are listed in Chapter 5.

VISION:

In 2040 Lucas County will be an accessible community where people of all ages and abilities, including children, can conveniently, comfortably, affordably, and safely walk, bicycle, or use public transit as part of their everyday travel behaviors.

GOALS:

- | |
|--|
| <p>1 HEALTH & SAFETY: Encourage the development of a safe and context-appropriate bikeway and pedestrian system for all users in Lucas County including special populations.</p> <ul style="list-style-type: none">• Reduce the amount of vehicular traffic by providing opportunities to utilize alternative modes of transportation.• Improve the overall well-being of Lucas County residents and minimize health care costs by promoting an active lifestyle that will serve to improve the resident's physical and mental health.• Reduce the number and severity of crashes involving pedestrians and bicyclists. |
| <p>2 LIVABILITY: Create a framework for a comprehensive, community-driven, transportation network for all users, of all ages.</p> <ul style="list-style-type: none">• Increase opportunities for physical activity with well-designed sidewalks, on-street bicycle facilities, and multiuse trails. |
| <p>3 EQUITY: Create a more accessible community for all through development of interconnected pedestrian and bicycle facilities.</p> <ul style="list-style-type: none">• Increase connectivity of active transportation facilities to improve access to job opportunities, medical care, and local commercial services. |
| <p>4 SUSTAINABILITY: Reduce per capita energy consumption and promote alternative fuel resources to increase affordability and resilience of regional energy supplies.</p> |

CHAPTER 2

EXISTING

CONDITIONS



This chapter provides an overview of relevant demographic, health, and safety data; current and previous planning efforts; existing and planned biking and walking infrastructure; and active transportation programs in Lucas County. It also identifies gaps and challenges that the recommendations in this plan seek to address.

WALK.BIKE.OHIO ANALYSES

In 2020, the Ohio Department of Transportation (ODOT) completed its first statewide bicycle and pedestrian plan, [Walk.Bike.Ohio](#). During the two-year planning process, ODOT documented existing conditions across the state and developed resources to support the development of local active transportation plans like this one. The safety, need, and demand analyses completed as part of Walk.Bike.Ohio help illustrate why this plan is needed.

HEALTH AND SAFETY

Health and safety (crash) data illustrate the necessity of this Plan. Lucas County ranks in the bottom 25% of counties in Ohio for overall health outcomes. Compared to the rest of Ohio, Lucas County has a higher adult obesity rate and slightly higher rate of physical inactivity, which can lead to chronic diseases. Lucas County also ranks slightly higher than the state average for air pollution levels and motor vehicle crash deaths, which both contribute to premature deaths.² Safe, accessible active transportation facilities can help more people incorporate physical activity into their daily lives and drive less, improving health outcomes.

Table 1 summarizes the total number of fatal and serious pedestrian- and bicyclist-involved crashes in Lucas County from 2009-2018. The data is from the [Ohio Strategic Highway Safety Plan](#), which also identifies the most common crash types affecting pedestrians and bicyclists in Lucas County. For pedestrian fatalities, the most common crash types are midblock crossings, walking along the roadway, and conflicts with through vehicles at intersections. Most bicyclist fatalities happen at night and are due to motorist failure to detect the bicyclist, a bicyclist riding out into an intersection, and wrong way riding.

² Lucas County, OH 2020, County Health Rankings.
<https://www.countyhealthrankings.org/app/ohio/2020/rankings/lucas/county/outcomes/overall/snapshot>

Table 1: Total Bicycle- and Pedestrian-involved Crashes, 2009-2018

Travel Mode	Fatal Crashes, 2009-2018	Serious Injury Crashes, 2009-2018
Pedestrian-involved crashes³	61	317
Bicyclist-involved crashes⁴	12	120

The pedestrian and bicyclist safety analyses performed as part of the Walk.Bike.Ohio planning process looked at average crash rates to generate a ranked list of all 88 counties in Ohio. Lucas County is the only county to be listed among the top five for both pedestrian- and bicycle-involved crashes (see Table 2 and Table 3). For severe injury and fatal pedestrian crashes, Lucas County ranks higher than other counties with large cities. This is not a distinction to be celebrated and indicates there is much work to be done to provide safer facilities for walking and bicycling and educate all road users about safe behaviors.

Table 2: Fatal and Serious Injury Pedestrian Crash Rates by Population, 2009-2018

Rank	Name	Average Crash Rate (per 100,000 residents, 2009-2018) ⁵
1	Hamilton	9.6
2	Lucas	8.4
3	Franklin	7.9
4	Montgomery	7.9
5	Scioto	7.2

Table 3: Fatal and Serious Injury Bicyclist Crash Rates by Population, ,2009-2018

Rank	Name	Average Crash Rate (per 100,000 residents, 2009-2018) ⁶
1	Holmes	4.3
2	Defiance	3.7
3	Van Wert	3.7
4	Lucas	3.0
5	Sandusky	2.7

³ Pedestrian Fact Sheet, Ohio Strategic Highway Safety Plan.
<https://www.transportation.ohio.gov/wps/portal/gov/odot/programs/highway+safety/dashboard-tests/04-strategic-highway-safety-plan-dashboards>

⁴ Bicycle Fact Sheet, Ohio Strategic Highway Safety Plan.
<https://app.powerbigov.us/view?r=eyJrIjoIM2QyZDI5NGEtdjg0Ny00NzcyLWFkZGUtZTIIZTRiNGRiMDNkIiwidCI6IjUwZjhmY2M0LTk0ZDgtNGYwNy00NGViLTM2ZWQ1N2M3YzhhMiJ9>

⁵ Bicyclist Safety Analysis Walk.Bike.Ohio.
<https://transportation.ohio.gov/static/Programs/WalkBikeOhio/Walk.Bike.Ohio.BicyclistSafetyAnalysis.pdf>

⁶ Bicyclist Safety Analysis Walk.Bike.Ohio.
<https://transportation.ohio.gov/static/Programs/WalkBikeOhio/Walk.Bike.Ohio.BicyclistSafetyAnalysis.pdf>

NEED

The Walk.Bike.Ohio needs assessment identifies **locations with concentrations of vulnerable populations that rely most heavily on bicycling, walking, and taking transit** to help prioritize bicycling and walking infrastructure where it could have the greatest impact on the lives of Ohio residents. The needs assessment identifies 7 demographic indicators that make populations vulnerable to unsafe or incomplete active transportation networks: people of color, youth, older adults, people living in poverty, adults with no high school education, residents with limited English proficiency, and households with no access to a motor vehicle.

The assessment uses Census data to determine the number of residents in each demographic indicator separately and creates a composite need map by assigning equal weighting to each indicator. In the Toledo-Lucas County area, approximately 196,000 residents, or almost half of the county's population, live in areas with high needs. The Census tracts with very high need are mostly found in the City of Toledo, but there are other tracts with high needs elsewhere in the county as well (see Figure 2). A more detailed explanation of the needs analysis methods and rationale is available in the [Walk.Bike.Ohio Needs Analysis](#) report.



Lucas County: Active Transportation Need

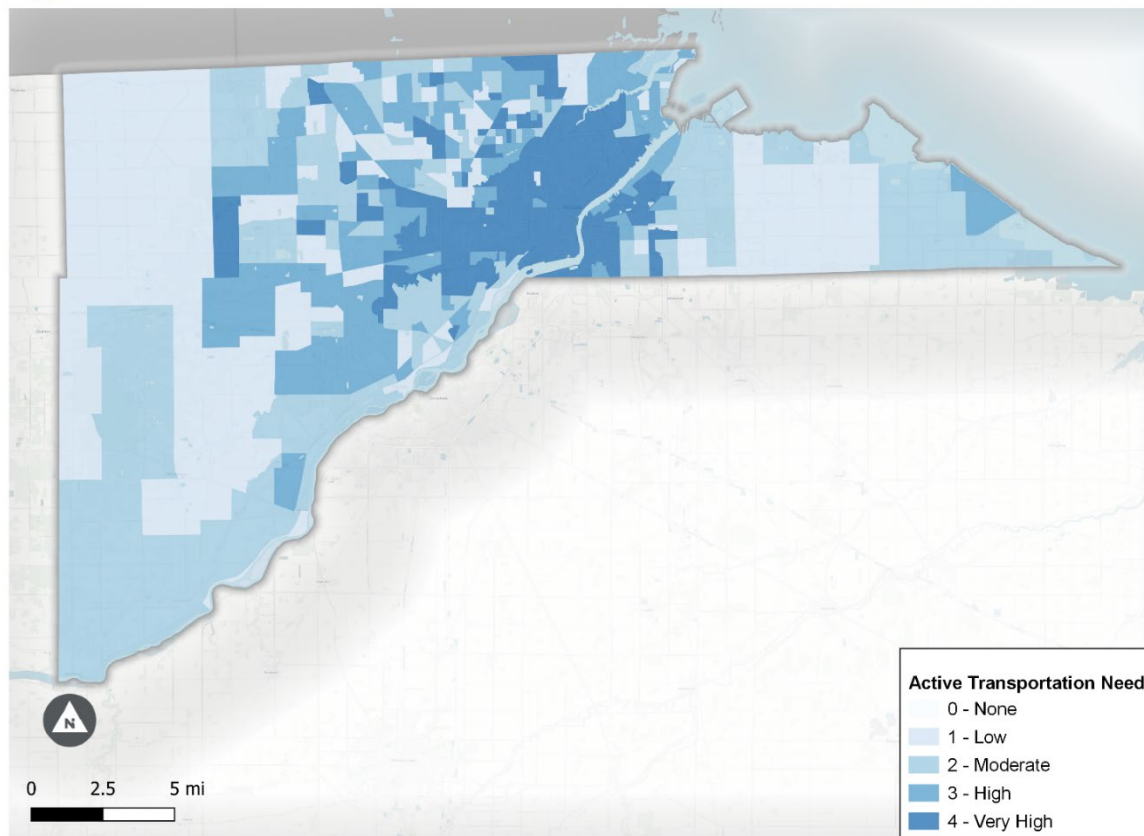


Figure 4: Composite Need Map. Darker areas have concentrations of populations with multiple demographic need indicators.

DEMAND

The Walk.Bike.Ohio demand analysis is “an objective, data-driven process that estimates the **cumulative demand for active transportation and recreation depending on where people live, work, play, shop, learn, and access transit.**” Demand for walking and biking is generally higher in areas with higher residential and employment density, as well as near retail, educational institutions, parks, and other attractors. As Figure 3 shows, there are multiple clusters of high demand in Lucas County associated with the density of retail, housing, and employment found along the riverfront and in the business districts of neighboring suburbs. For an explanation of the demand analysis methods and data sources, see the [Walk.Bike.Ohio Demand Analysis](#) report.



Lucas County: Active Transportation Demand

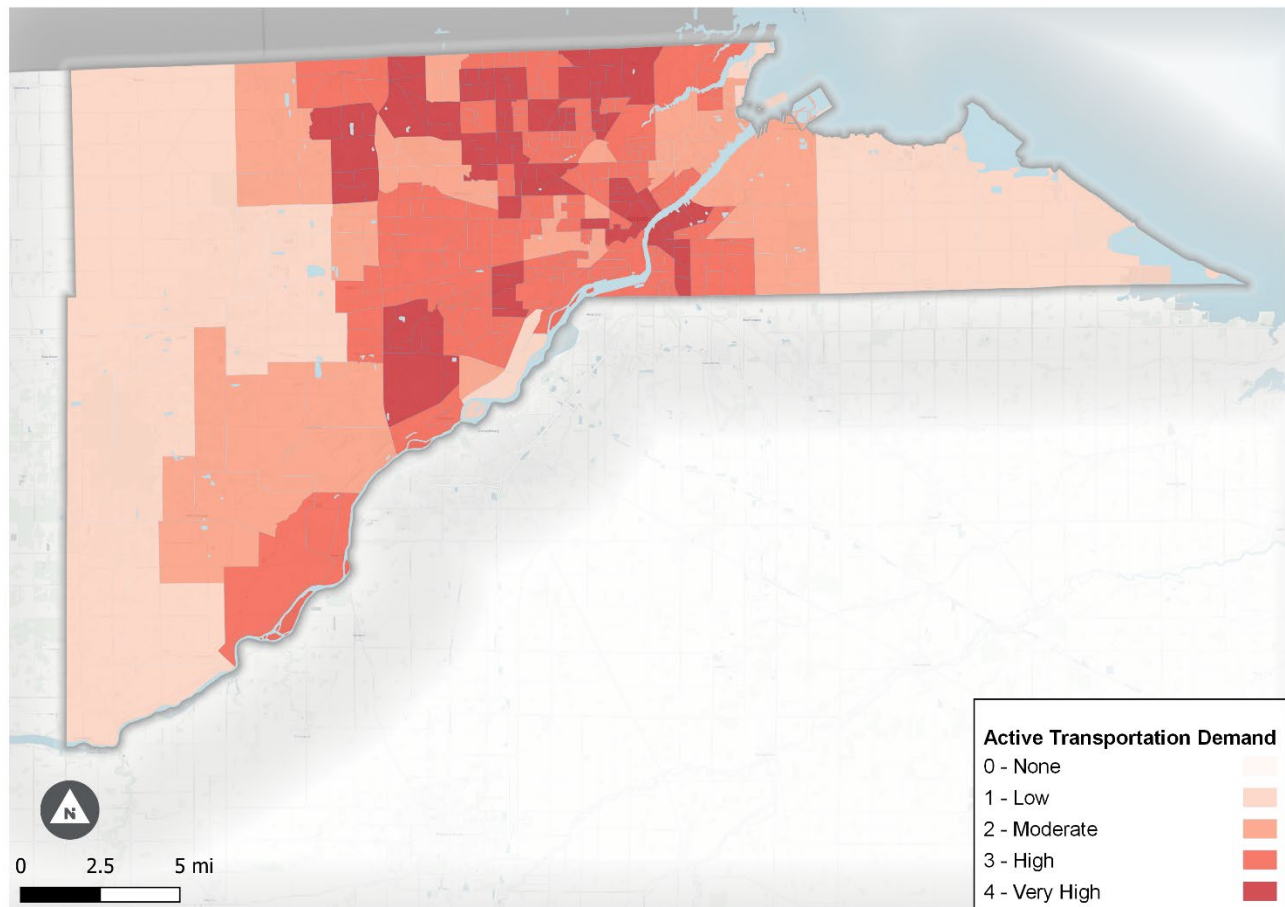


Figure 5: Composite Demand Map. Darker areas have greater demand for walking and bicycling opportunities.



Figure 6: Students and caregivers walk to Hawkins Elementary School from a remote drop-off location on Walk to School Day.

EXISTING PLANS & POLICIES

The current walking and bicycling environment in Lucas County is the result of numerous local plans and policies developed and implemented over time. Table 4 provides an overview of the types of plans developed by Lucas County and others that relate to active transportation. Challenges to fully implementing these plans and realizing a connected active transportation network include differing priorities, standards and policies among local jurisdictions, and resource limitations such as staff capacity and available funding for new projects. This Plan attempts to bridge some of the gaps between existing local plans and policies by providing a coordinated vision and recommendations for a better-connected active transportation network county-wide.

Table 4: Overview of local plans related to active transportation

Plan Type	Examples
Bicycle Plans	City of Oregon 2035 Master Bikeway Plan City of Toledo Bike Plan (2015) City of Sylvania Bike Network (2009)
Complete Streets Policy, Ordinance, or Resolution	City of Toledo Lucas County City of Sylvania Toledo Metropolitan Area Council of Governments (TMACOG)
Comprehensive Plans & Land Use Plans	City of Oregon 2025 Master Plan City of Sylvania Land Use Plan City of Toledo 2020 Plan (2011) City of Toledo Master Plan (2017)
County plans with relevant goals	Toledo-Lucas County Sustainability Plan (2014) Lucas County Health Improvement Plan (2018)
Metropolitan Planning Organization (MPO) Long Range Transportation Plan	TMACOG On the Move: Transportation Plan - Update 2020
Neighborhood / Corridor Plans (City of Toledo)	Downtown Toledo Master Plan & Downtown Toledo Transportation Plan Middle Grounds District Plan (2015) Old South End Master Plan (2017) Vistula Neighborhood Plan (2020)
Parks Districts, Shared-Use Path, or Trails Plan	Metroparks Toledo Vision Plan (2015)
Safe Routes to School Plans	Maumee City Schools Oregon City Schools (2008) Sylvania City Schools (2010) Toledo Public Schools (updated 2019) Washington Local Schools
Transit Agency Short- or Long-Range Plan (Toledo Area Regional Transit Authority)	Transforming TARTA Strategic Plan (2021)
Vision Zero Commitments	City of Toledo (2021)

EXISTING & PLANNED INFRASTRUCTURE

SIDEWALKS

As shown in Figure 5, sidewalks are present on many streets in Lucas County, especially in more urban areas. However, not all sidewalks meet the Americans with Disability Act (ADA) accessibility standards for width, smooth surfaces, cross slope or curb ramps at every corner. Along major arterial roads, sidewalks are often located immediately adjacent to moving traffic and are frequently interrupted by multiple driveways that provide access to parking lots, creating safety conflicts between drivers and pedestrians.

Sidewalks are just one component of the pedestrian network and overall walkability. When asked about gaps and barriers that affect the pedestrian experience, members of the Steering Committee cited:

- Lack of ADA accessible curb ramps at many intersections,
- Missing pedestrian signal heads at many traffic signals,
- Not enough pedestrian scale lighting or wayfinding,
- Land use policies where large commercial parcels are far from residential areas, and
- Poor sidewalk connectivity across the region.

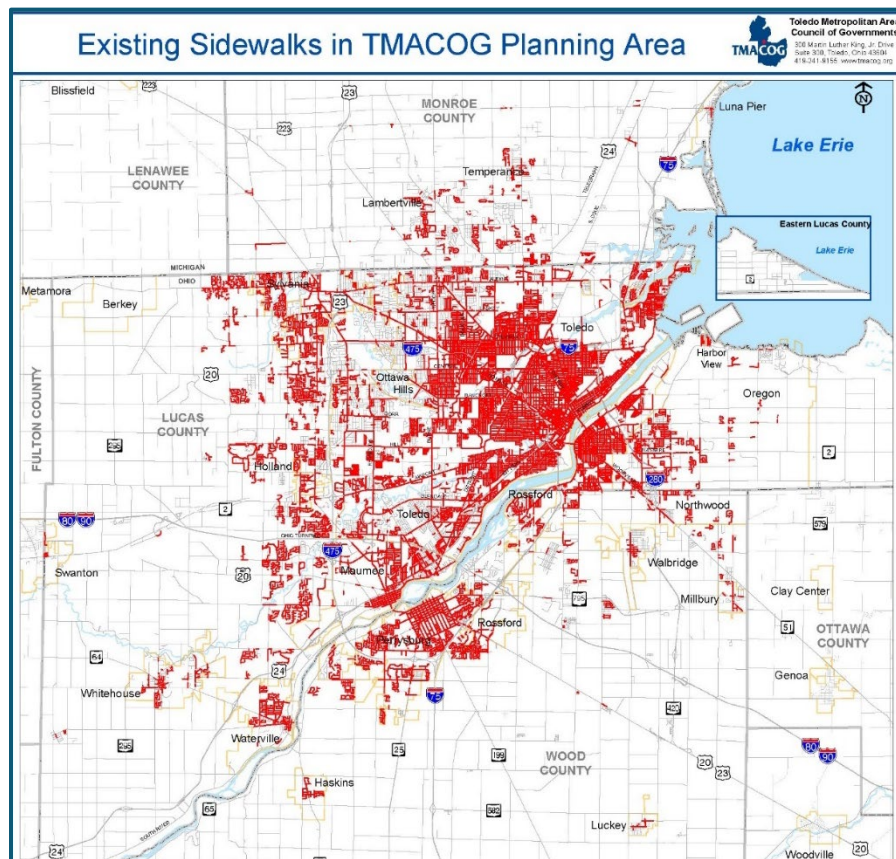


Figure 7: TMACOG Regional Sidewalk Map with red lines indicating the presence of sidewalks

BICYCLE FACILITIES

The existing network of bicycle facilities in Lucas County consists of both off-street trails and on-street routes. The trail network is one of Lucas County's key active transportation strengths, as trails are comfortable facilities for a wide range of bicyclists and pedestrians. Many of the previously planned facilities expand and connect the existing trail network (see Figure 6).

Beyond the gaps in the existing bike network, the Steering Committee and public survey respondents cited the following conditions as negatively affecting bicycling in Lucas County:

- A lack of bicycle parking,
- Maintenance issues with existing bicycle facilities,
- A limited number of river crossings, and
- High speeds and high volumes of motor vehicle traffic.



Lucas County: Existing and Planned Bike Network

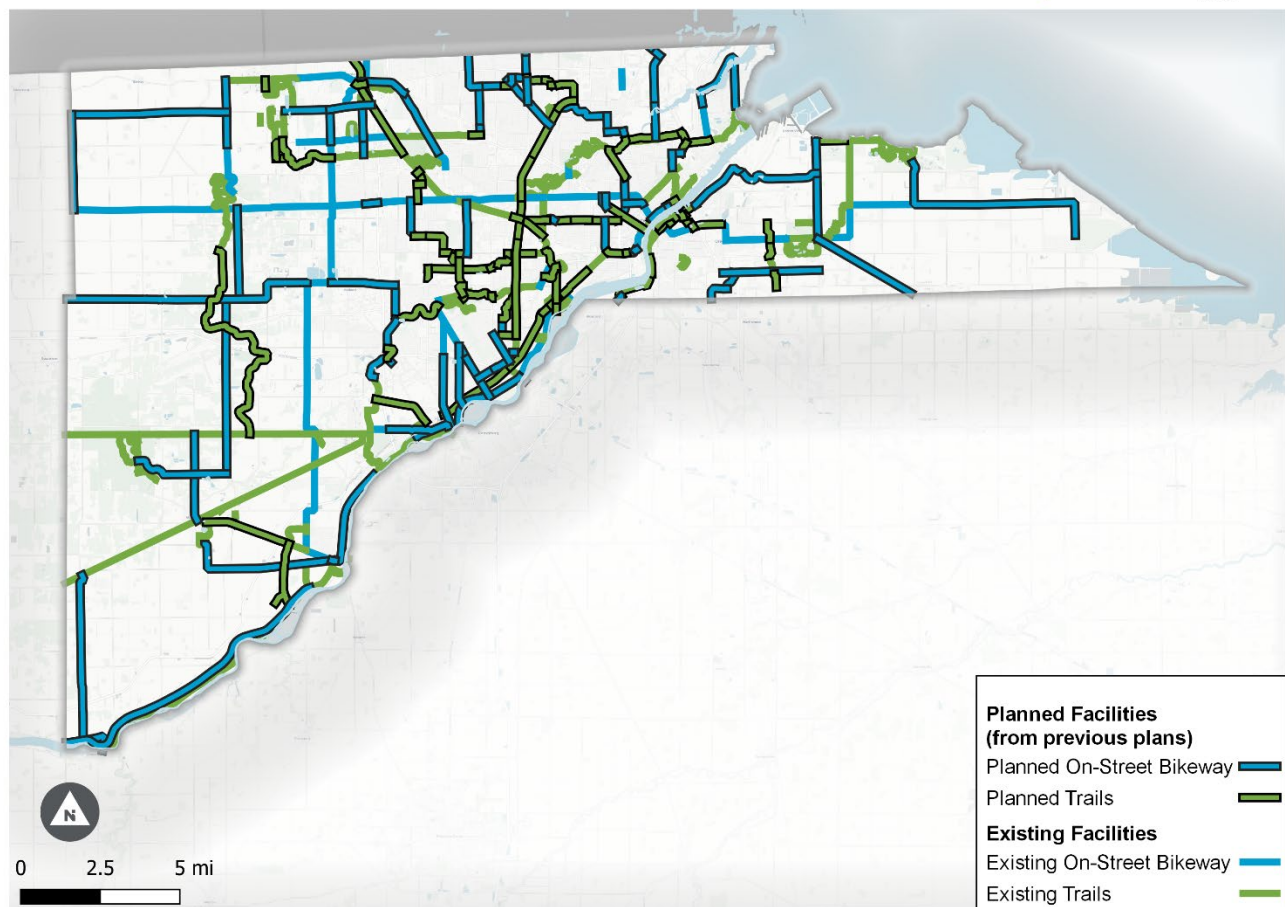


Figure 8: Existing and planned bicycle facilities in Lucas County

EXISTING PROGRAMS

Multiple existing active transportation education and encouragement programs are another of Lucas County's greatest strengths. Programs are run and supported by a variety of organizations and try to reach residents of all ages and travel preferences.

Key programs include:

- **[Safe Routes to School](#)** - Safe Routes to School supports safe active transportation for students. The most active Safe Routes to School (SRTS) programs in Lucas County are in City of Toledo (Toledo Public Schools) and Washington Local Schools. A paid coordinator works with schools and local governments to implement ODOT-approved SRTS plans, develop education programs, and provide incentives for students that walk and bike to school. For the 2021-2022 school year, SRTS is working to establish walking school bus routes at multiple schools to improve student attendance and academic performance. A walking school bus is an adult-supervised group of students that walk along a designated route to get to school.
- **[We Are Traffic](#)** - We Are Traffic is a bicycling advocacy organization that teaches safe bicycling skills, leads group bike rides, and works with local governments to improve bicycle facilities throughout Lucas County.
- **[Bike Month](#)** - Bike Month is an annual event that celebrates bicycling. A multi-disciplinary committee, led by TMACOG, plans and leads a variety of Bike Month promotions and activities designed to get more people on bikes every May.
- **[Toledo Area Bicyclists](#)** - Toledo Area Bicyclists has been promoting cycling in northwest Ohio since 1981 and organizes recreational group rides.
- **[Toledo Bikes](#)** - Toledo Bikes works to promote safe bicycle transportation in the public, provide education on bicycle maintenance and safety, and make reused and recycled bicycles available to the community, including those who could not otherwise afford one. They offer open shop hours and earn-a-bike programs.

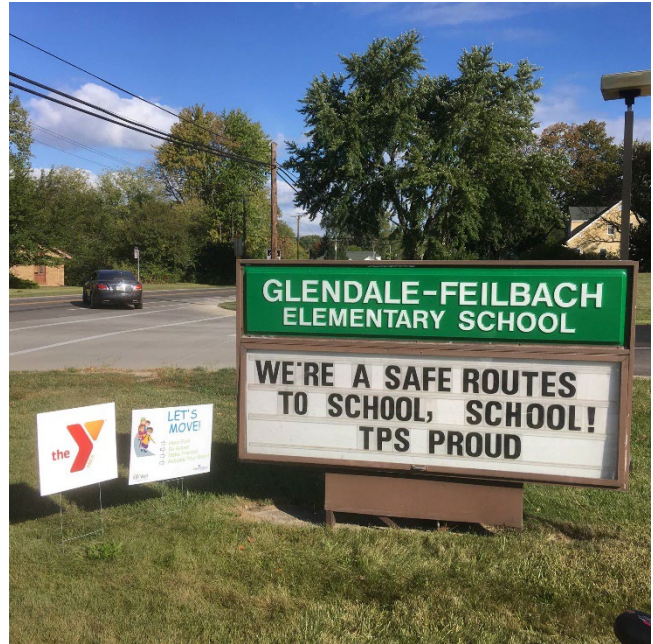


Figure 9: Glendale-Feilbach Elementary School in Toledo is a proud participant of Safe Routes to School.

- **Bikeshare and Scooters** - The City of Toledo launched its first bikeshare program in March 2018, and in 2021 switched providers in order to provide an all-electric shared bicycle and scooter fleet. The 100 electric bikes and 400 scooters are part of a 10-month pilot program aiming to give Toledoans and visitors another healthy and climate-friendly transportation option.⁷

Steering Committee members and survey respondents cited the following gaps and barriers to walking and biking in Lucas County:

- A general sense that more education for all road users is needed,
- A car-centric culture,
- Unequal access to affordable, reliable bicycles, and
- Inclement weather.

SUMMARY OF EXISTING CONDITIONS

Ongoing investment in active transportation planning, education, and facility construction has the potential to improve the quality of life for Lucas County residents. The Walk.Bike.Ohio analyses show where investments are most needed, and existing plans and policies lay the foundation for the recommendations in this Plan.

Despite the common challenges the county faces - routes that cross jurisdictional boundaries, a car-centric culture and built environment - it also has exciting opportunities not found in other communities - miles of recreational trails, a redeveloping riverfront, and a broad coalition of supportive stakeholders led by Toledo-Lucas County Health Department and Live Well Greater Toledo.

The next chapter summarizes public feedback on these existing active transportation conditions and how to take advantage of these opportunities to improve walking and bicycling for all people.

⁷ Bike Share and Scooter Share Announcement, August 20, 2021. <https://toledo.oh.gov/news/2021/08/10/bike-share-and-scooter-share-announcement>

CHAPTER 3

COMMUNITY

ENGAGEMENT



The project team conducted extensive community outreach for this plan in the summer of 2021. There were several goals of the community engagement: first, the project team wanted to introduce people to the concept of an Active Transportation Plan and show how the plan will lead to healthier outcomes. Second, the project team wanted to understand the needs and wants of people who live, work, and visit Lucas County. A high degree of participation in the planning process ensures that the resulting recommendations reflect local needs, and that the community will support the implementation of the recommendations.

This chapter describes the community engagement strategies used and key themes that emerged from the input received.

STRATEGIES

STEERING COMMITTEE

A Steering Committee comprised of a variety of stakeholders with interest in active transportation helped guide the development of the Active Transportation Plan. Steering Committee members are listed under Acknowledgments at the beginning of this document. The Steering Committee met bi-monthly over the course of the plan development and provided feedback on:

- Community engagement,
- Bicycle network recommendations,
- Pedestrian countermeasures and policies, and
- Program and policy recommendations.

The Steering Committee also informed the project team of ongoing initiatives and upcoming projects related to active transportation.

SURVEY AND MAP

A public survey was created to understand travel habits of Lucas County residents and how people would like to see active transportation improved. The survey was available both online and on paper. The survey asked how often respondents walk or bike, why they walk or bike, and how to improve walking and biking in Lucas County. The survey also included demographic questions that

enabled the project team to compare responses to county demographics and adjust outreach strategies to get more representative responses.

The project team also used an interactive mapping tool to understand which streets and intersections are commonly used by people walking and bicycling and/or need improvements (see Figure 8). Participants could add routes where they wish they could ride or routes they use now to access their desired destinations. Participants could also draw points to indicate places that they have difficulty walking or bicycling. This information helped the project team develop the proposed bicycling network and other recommendations.

After about a month of promoting the online map and survey, the project team presented a summary of responses to the date to the Steering Committee. The majority of responses to the online survey were from a white audience and not representative of the county's population.

To reach more people of color, the project team provided paper surveys at libraries, farmer's markets, and other local destinations. This effort increased the reach of the survey and ensured that diverse voices were captured by the survey. The map was available online May through September 2021, and as a poster at several tabling events in July and August 2021.

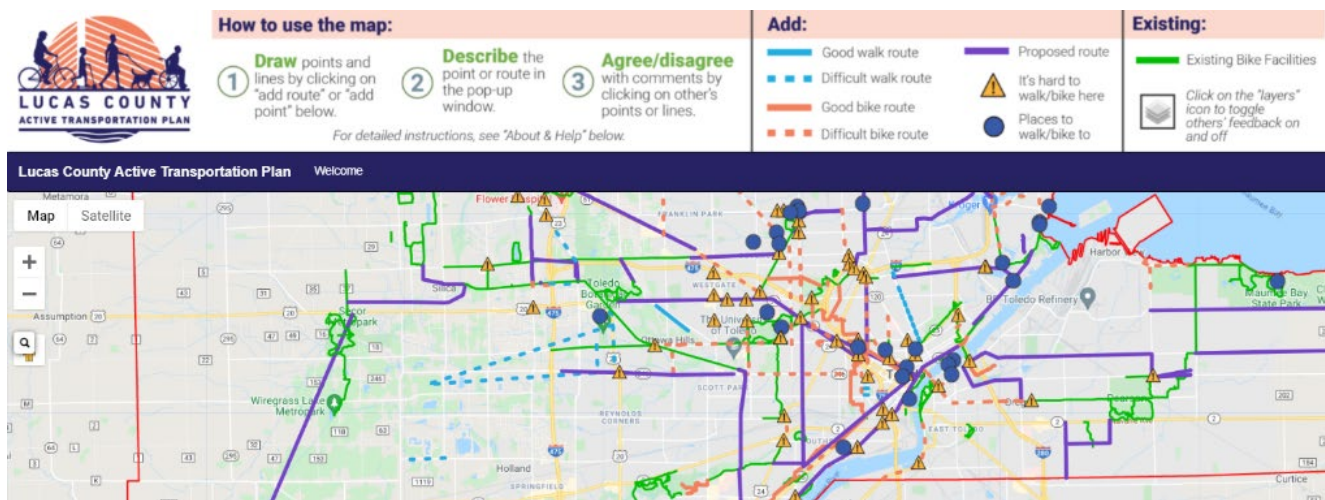


Figure 10: Screenshot of the online interactive map. Visitors completed a welcome survey and could draw lines or place points to provide feedback on walking and biking routes and conditions.

The table and images below describe various methods used to promote the survey and interactive map from May to September 2021.

Table 5: Survey Promotion Methods

Engagement Tool	Location	Purpose
Online Survey	Webpage on Live Well Toledo site (livewelltoledo.org/local-active-transportation)	Webpage shared information about the Plan, including the schedule, goals, and other updates. The webpage also included a link to the online survey.
	Social Media Posts	Messages from Live Well Greater Toledo and other partners encouraged people to take the online survey and learn about the ATP.
Paper Surveys	West Toledo YMCA	Paper surveys made available to parents attending a bike fix-it/helmet fitting event.
	Toledo Public Libraries: Birmingham, Oregon, South Toledo, Point Place, LaGrange, West Toledo, Kent, Locke	Paper surveys made available to library visitors.
	Art Loop Event	Paper surveys made available.
Pop Up Events/Tabling	Farmer’s Market	Table set up where patrons could talk to staff and fill out paper surveys. Patrons could also use the poster map to pinpoint areas where they have trouble walking or bicycling.
	TARTA Transit Center	
	Safe Kids Day	
Print Ads	Metroparks A-Frame Signs at trailheads	Signs promoted the online survey and map on 10 different trailheads throughout the County.
	Time Based Bus Messages Interior Bus Signs	Advertisements promotes the online survey and map to bus riders.



Figure 11: A-Frame sign promoting the online survey at Glass City Metropark.



Figure 12: Tabling at the TARTA Transit Hub in Downtown Toledo.



How was your walk to the bus stop?



Help make walking and biking better by taking the Active Transportation Survey at www.livewelltoledo.org/local-active-transportation



Figure 13: Interior bus advertisement

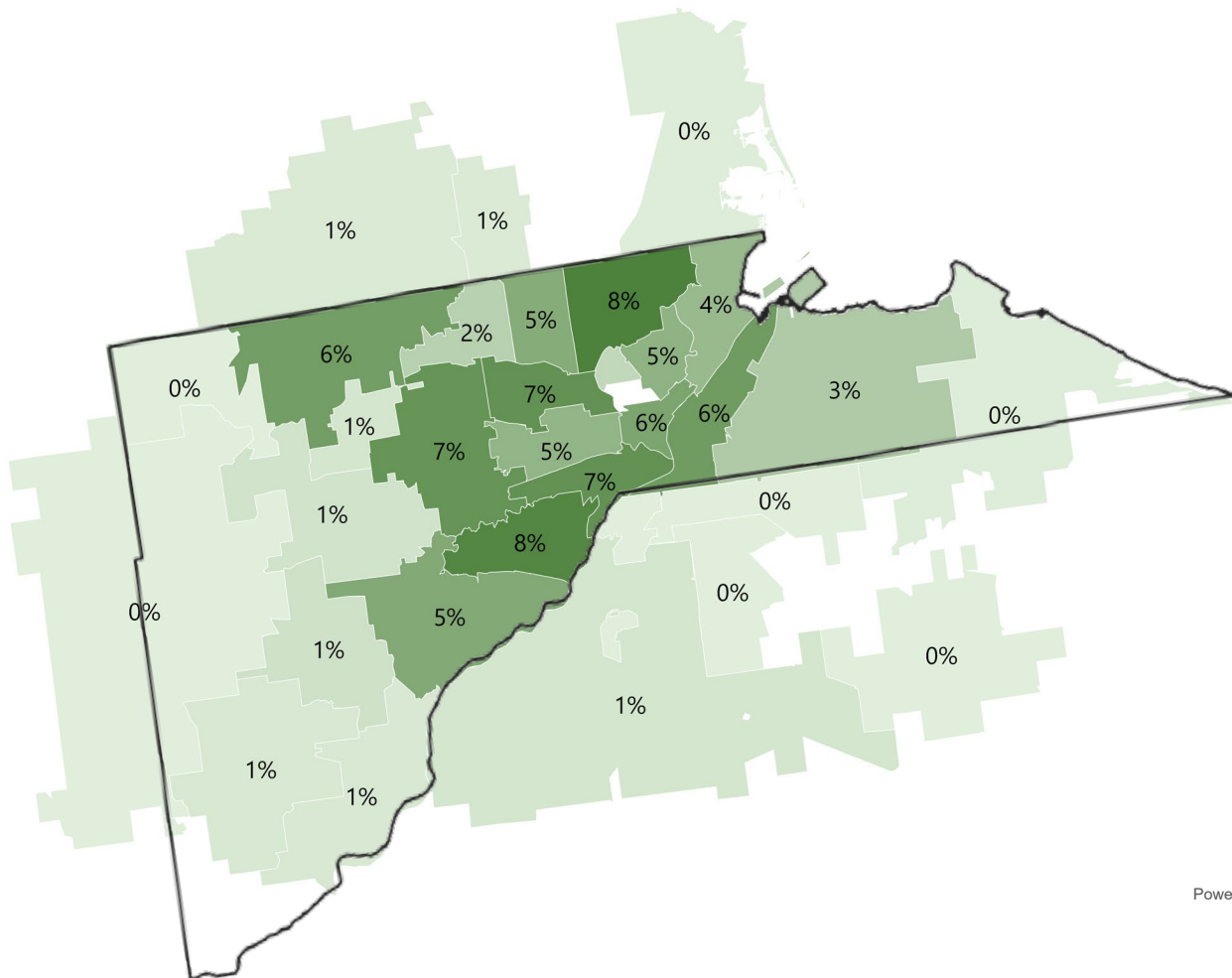
SURVEY RESPONDENTS

This Plan would be incomplete without the contributions of a wide cross section of community members. More than 650 people responded to the online and in-person surveys, which shows that people are interested in improving conditions and walking and biking for everyday trips. The project team received 387 online responses and 266 in-person responses.

Geography - Many responses came from central Lucas County (see

Figure 12). Zip codes 43612, 43614, 43609, 43606, and 43615 each represented at least 7% of survey respondents.

Respodents by Zip Code

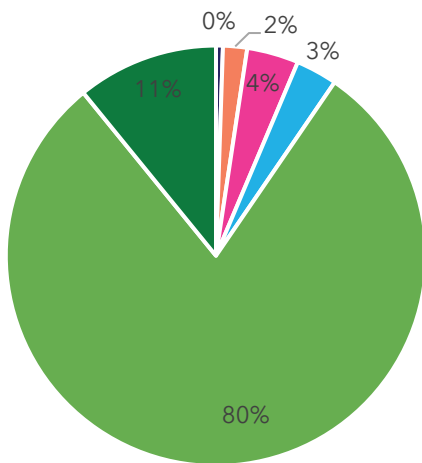


Gender and Age - Of those who responded to the survey, 49% identified as female, 46% identified as male, 2% identified as gender non-conforming, and 3% preferred not to answer. The majority (67%) of respondents were between 25 and 54 years of age.

Race - Figure 13 shows the stark differences in the distribution of race among online and paper survey respondents. Using a combined approach of both online and in-person engagement resulted in an overall response that more closely mirrors the County’s demographics:

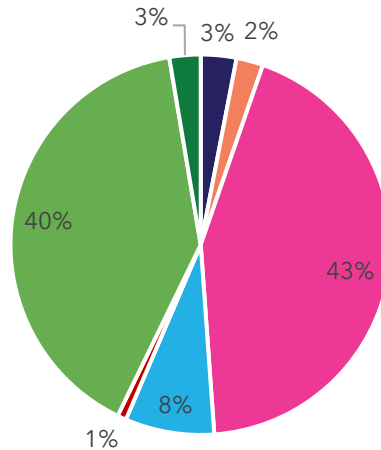
- 63% of survey respondents identified as white, (68% of county population)
- 20% identified as Black or African American, (19% of the county population)
- 5% identified as multi-racial,
- 2% identified as American Indian or Alaska Native,
- 2% identified as Asian, and
- 8% did not list a racial category.

Race Distribution of Online Survey Respondents



- American Indian or Alaska Native
- Asian
- Black or African American
- Multi-racial
- White
- Prefer not to answer

Race Distribution of Paper Survey Respondents



- American Indian or Alaska Native
- Asian
- Black or African American
- Multi-racial
- Native Hawaiian or other Pacific Islander
- White
- Prefer not to answer

Figure 15: Comparison of the race distribution of respondents from the online and paper survey

Disability - This Plan seeks to create a transportation network that better serves people of all abilities, so the input of these populations is especially valuable. The distribution of respondents by disability is shown in Figure 14. Approximately 20% of respondents reported having a disability that made it difficult to get around. Of those respondents who did list a disability, 10% were low vision/blind, 5% were hard of hearing/deaf, 2% used a wheelchair or walker, and 5% listed another disability.

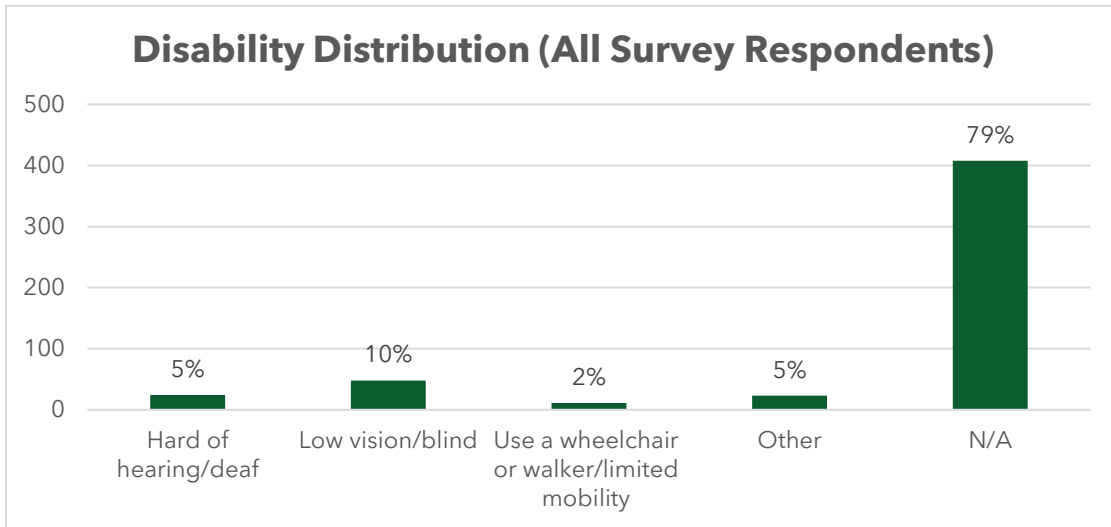


Figure 16: Distribution of survey respondents by disability

Access to a car - The project team also wanted to hear from people who may depend on walking, biking, and/or transit for transportation. Figure 15 shows nearly 20% of survey respondents do not have access to a household vehicle.

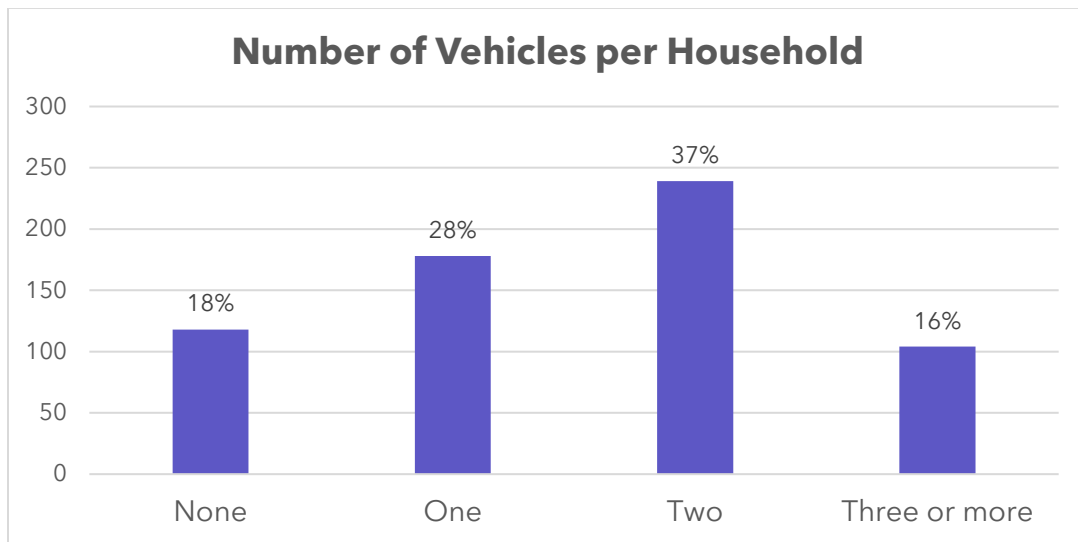


Figure 17: Distribution of survey respondents by household vehicle ownership or rental

WHAT WE HEARD

SURVEY RESPONSES

In the survey, respondents shared their experiences walking or bicycling in Lucas County. The following is a summary of what they said, which later shaped the Active Transportation Plan network and recommendations.

Active Transportation Frequency - Thirty-nine percent (39%) of survey respondents reported walking most days for transportation, and 21% of respondents reported bicycling most days to get to their destination. On the other hand, 42% of respondents walk less than once a month for transportation, and 51% bike less than once a month for transportation (see Table 6).

Table 6: Frequency of walking and biking for transportation

	How often do you WALK for transportation?	How often do you BIKE for transportation?
Most days	39%	21%
Once a week	12%	18%
Once a month	8%	10%
Less than once a month	42%	51%

Bicyclist Level of Comfort - While the survey reached many experienced and recreational cyclists who ride mostly on trails, the survey also showed that a fifth of the survey respondents (21%) would bike if they felt safer doing so (see Figure 16).

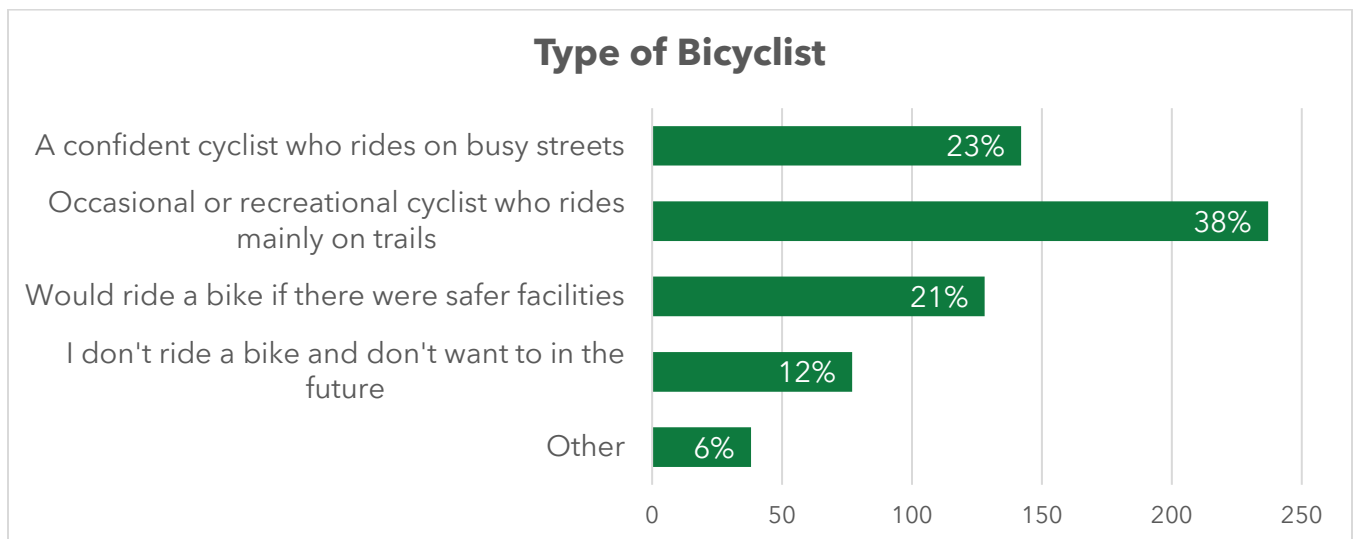


Figure 18: Type of bicyclist

Trip Purpose - Most survey respondents reported walking or biking for recreation, health, or exercise. The percentage of people who walk and bike to access destinations, such as stores, school, or work, is smaller. People also walk or bike for entertainment or errands. Other reasons for walking and biking included accessing bus stops and taking their dog outside (see Table 7).

Table 7: Reasons behind walking and biking

	Why do you WALK?	Why do you BIKE?
Recreation, health, or exercise	44%	45%
Shopping or errands	17%	14%
Commute to school or work	9%	11%
Social or entertainment	18%	18%
I don't walk/bike	2%	11%
Other	10%	1%

Desired Improvements - The online survey asked respondents what would encourage them to walk more for transportation (see Figure 17). The most common responses were better maintained sidewalks, new sidewalks where there are none, and improved crossings.



Figure 19: Walking improvements

When asked about what would improve bicycling in Lucas County (see Figure 18), survey respondents most often selected continuous bike routes that connect to destinations, designated bike lanes, and protected bike lanes.

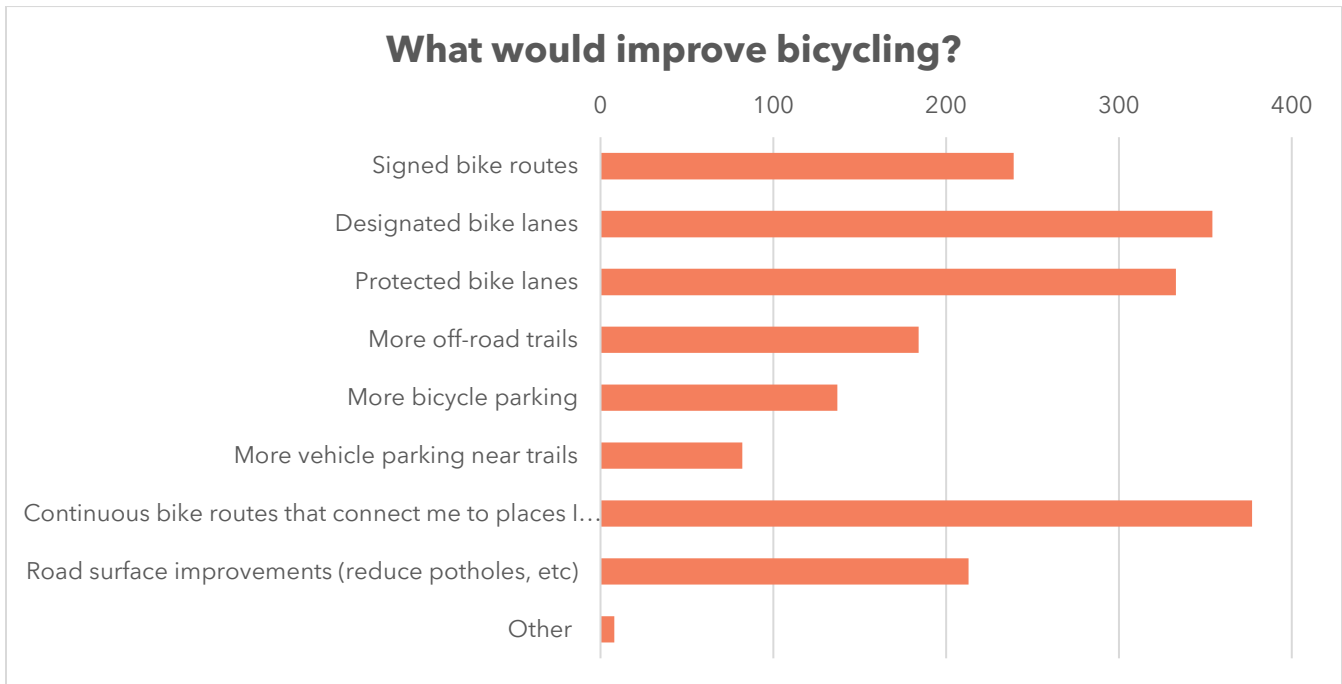


Figure 20: Biking improvements



Figure 21: Bicycle parking and bicycle repair stand along the Chessie Circle Trail.

LOCATION-BASED INPUT

The online map received close to 300 comments relating to popular destinations, good routes for walking and bicycling, and opportunities for improvement (see Figure 20).

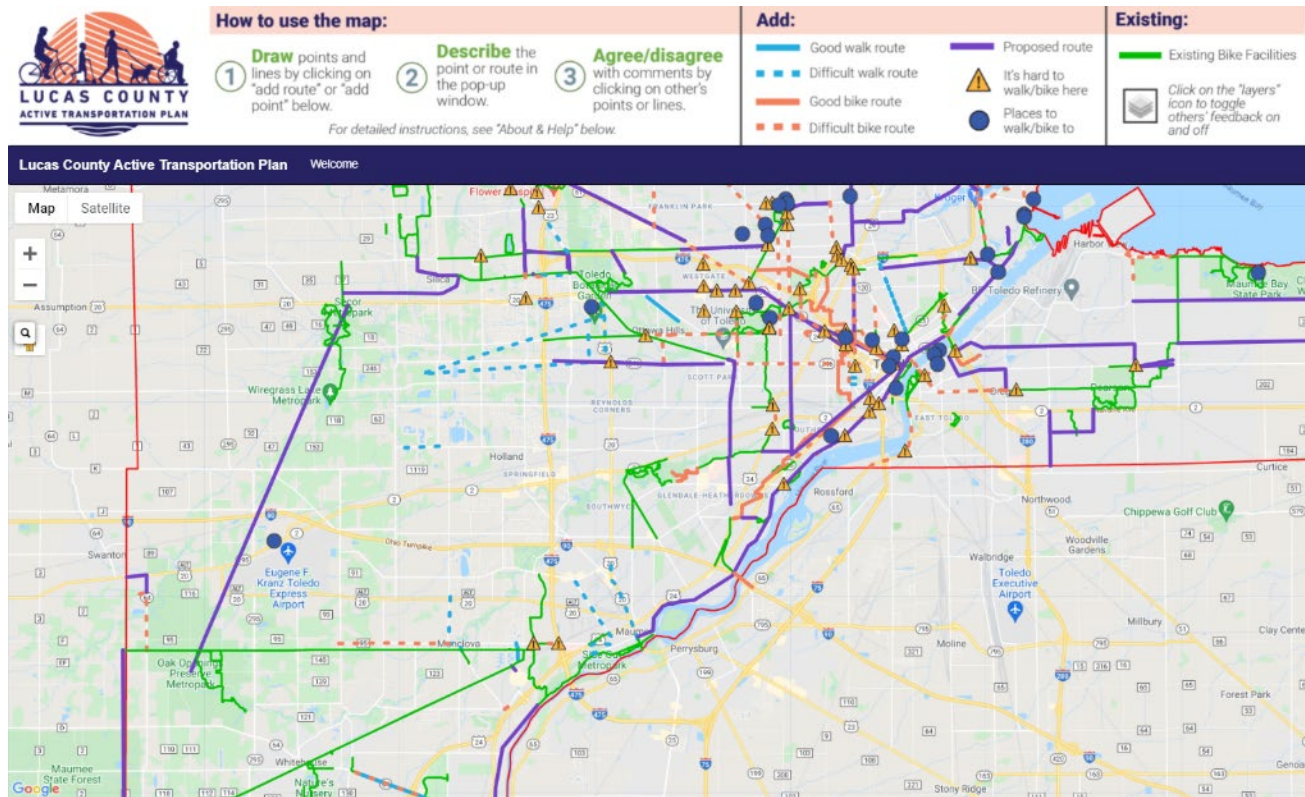


Figure 22: Screenshot of online map comments

Comments on the online map focused on safety, connectivity, and access. In general, public comments pointed towards the need for bicycle facilities that were protected from vehicle traffic, as well as the need for more signs and wayfinding. Public input also indicated where existing facilities were not adequate, such as parts of Bancroft Street.

Many commenters requested that the Active Transportation Plan connect the county's existing trail system and parks to create a more complete network. Other priorities included: ensuring that bicyclists can access Toledo from the suburbs; providing safe walking and biking access to commercial areas along arterial roads, the Toledo Zoo and Toledo Museum of Art; and giving students at the University of Toledo and other colleges affordable travel options.

PUTTING IT ALL TOGETHER

Information from the existing conditions assessment and community engagement process informed the development of a draft bicycle network, a pedestrian safety toolkit, and recommendations for programs and policies to support active transportation. These are described in the next chapter.

CHAPTER 4

RECOMMENDATIONS



Lucas County will be an accessible community where people of all ages and abilities, can conveniently, comfortably, affordably, and safely use active transportation as part of their everyday travel behaviors. This Plan calls for a connected, low-stress network for people walking, bicycling, using micromobility devices, and accessing transit.

The first section presents proposed projects for on-street bicycle facilities and shared use paths. The second section presents a pedestrian safety toolkit, and the third section presents program and policy recommendations that can support a cultural shift in how people travel and improve the regulatory environment to further promote walking and bicycling.

PROPOSED BICYCLE NETWORK

This section describes a proposed future bicycle network, which will provide low-stress routes within neighborhoods and connecting destinations throughout Lucas County. The proposed network fills in gaps between existing and previously planned bicycle facilities, which both eliminates barriers and leverages previous investments to significantly improve access. The proposed network also creates new routes and recommends upgrades to existing routes that currently only appeal to very confident bicyclists.

NETWORK RATIONALE

To develop the proposed bicycle network for this Plan, the project team revisited the Plan’s vision and goals. To meet the goals of the Plan, the proposed bicycle network needs to improve access and mobility and be safe and comfortable for a wide range of users.

- » To improve access and mobility, the network should cover the entire county.
- » Safe and comfortable requires more separation between modes as traffic speeds and volumes increase.

In addition to feedback from the public and steering committee detailed in Chapter 3, the project team assessed the presence and condition of existing infrastructure through Google Street View, satellite imagery, and data provided by TMACOG. The project team focused on developing small systems within the larger network to connect local destinations, as well as identifying cross-county connections for longer trips or recreation. The proposed bicycle network is continuous, connects seamlessly across jurisdictional boundaries, and provides improved access to everyday destinations.

The **proposed bicycle network**, comprised of existing routes (blue and green solid lines), previously planned routes (blue and green solid lines with black casing), and new routes identified during this Active Transportation (AT) Plan process (magenta lines) is shown in Figure 22.

Many of the streets in the network are large thoroughfares that provide important connections allowing people to travel between neighborhoods, to access daily needs, and to commute to work or school. These connections are also important for bicyclists, too. Anywhere a person would want to drive to for utilitarian purposes, such as commuting or running errands, is a potential destination for bicycling.

As such, planning connected low-stress bicycle networks is not achieved by simply avoiding motor vehicle traffic. Rather, the recommended **facility types** for the proposed bike network are designed to lower stress along higher traffic corridors so that bicycling can be a viable transportation option for more people. Strategies to reduce the amount of stress felt by people riding bicycles include traffic calming infrastructure, lowering the speed limit, and bicycle facilities that are physically separated from moving vehicles.

This network largely does not include recommendations for smaller neighborhood streets, which may have lower speeds that are more comfortable for walking and bicycling or are circuitous and do not provide through-connections.



Figure 23: The proposed bicycle network recommends that some existing bicycle facilities be upgraded to provide separation from motor vehicles.



Lucas County: Proposed Network

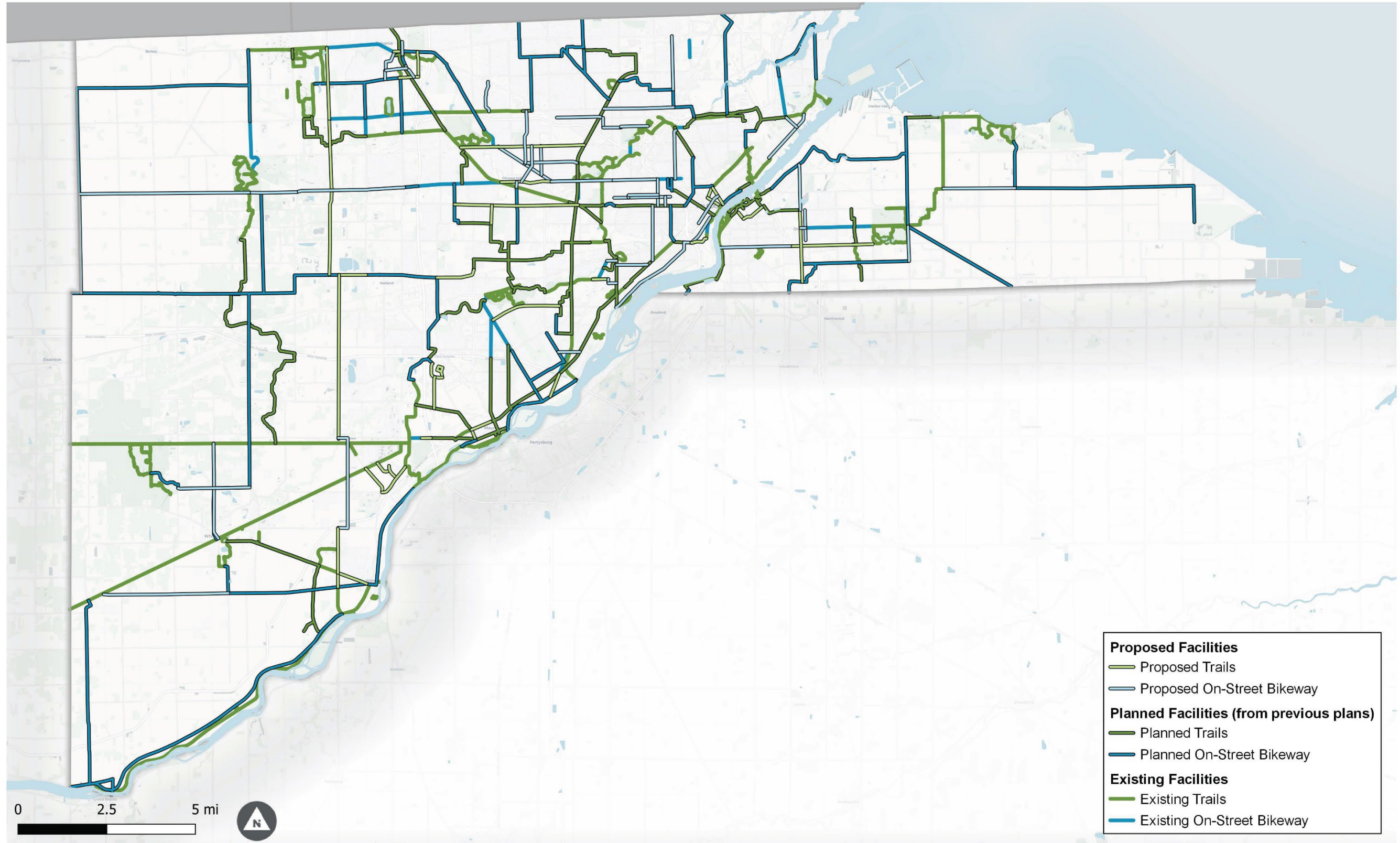


Figure 24: Proposed Bicycle Network

TYPES OF BICYCLISTS

Understanding which types of bicyclists feel comfortable using a given facility is key to building a safe, convenient, and well-used network. Comfort, skill, and age affect bicyclist behavior and preference for different types of bicycle facilities. Of adults who have stated an interest in bicycling, researchers have identified three types of potential and existing bicyclists: Interested but Concerned, Somewhat Confident, and Highly Confident (see Figure 23). Around 56% of all adults fall into the category of Interested but Concerned – they are interested in bicycling for transportation but are dissuaded by the potential for stressful interactions with motor vehicles.⁸

They generally prefer bicycle facilities that are more separated from motor vehicle traffic. To achieve a significant increase in numbers of people biking in Lucas County, the project team aimed to identify routes and choose facility types that would be comfortable for this population. In some contexts, such as rural roadways in the eastern and western parts of the County, the Somewhat Confident or Highly Confident rider is the most relevant design user.

According to the public survey, 38% of Lucas County residents are occasional or recreational cyclists who ride mostly on trails and 21% of residents would be interested in riding a bicycle if there were safer facilities. This is more than half of the adult population that would bicycle more if facilities were comfortable and abundant.

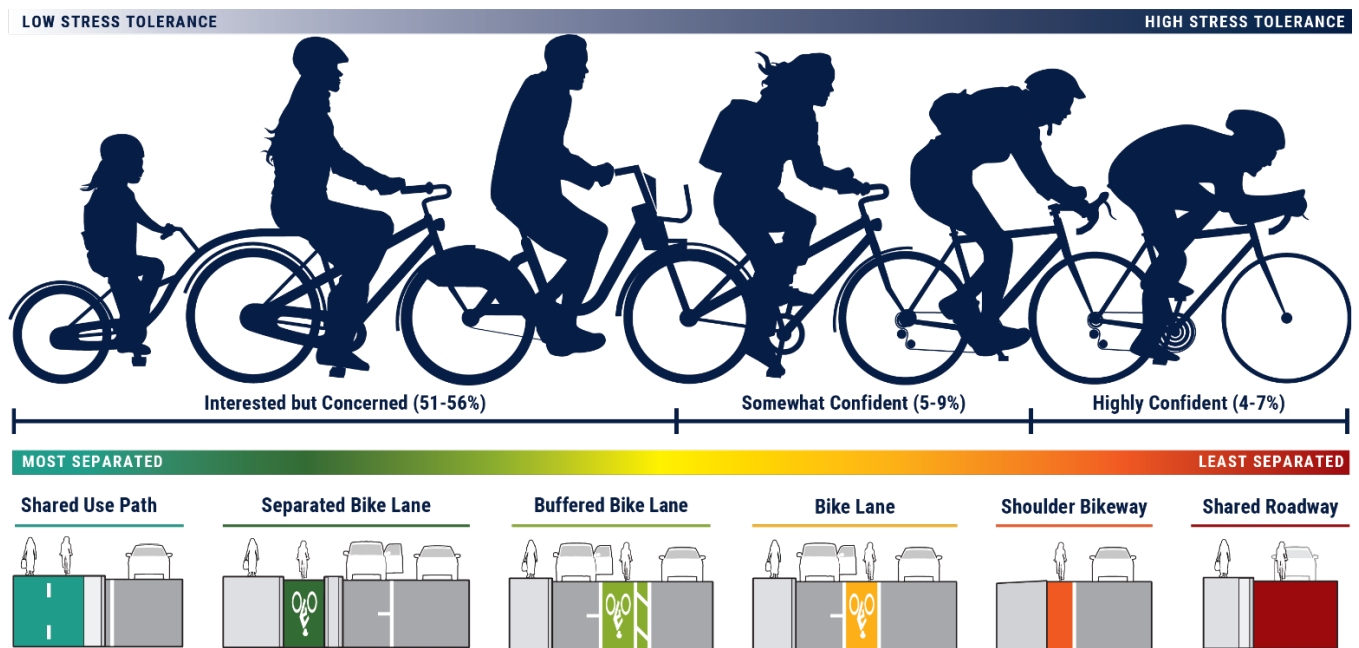


Figure 25: Types of Bicyclists and Facility Types

⁸ Schultheiss, B., Goodman, D., Blackburn, L., Wood, A., Reed, D., and Elbech, M. (2019). Bicycleway Selection Guide. Federal Highway Administration. https://safety.fhwa.dot.gov/ped_bicycle/tools_solve/docs/fhwasa18077.pdf

BICYCLE FACILITY TYPES

Once the proposed routes were identified and vetted by members of the Steering Committee, the project team identified recommended facility types for each new connecting route by identifying the anticipated design user and following guidance on context, speed, and volume found in the [FHWA Bikeway Selection Guide](#). The proposed AT Plan routes shown in Figure 22 and detailed in the project tables include:

- » 47 miles of Shared Use Paths
- » 5 miles of Buffered or Separated Bicycle Lanes
- » 21 miles of Bicycle Lanes
- » 11 miles of Bicycle Boulevards
- » 20 miles of Wide Shoulders

The following pages show examples and describe each recommended facility type.



Figure 26: The Active Transportation Plan routes and facility types were selected with a wide variety of users in mind, including younger bicyclists.

Shared Use Path



A shared use path is a facility physically separated from traffic but intended for shared use by a variety of groups, including pedestrians, bicyclists, and joggers. They may be built independent from the road network or alongside a roadway.

Design User: Interested but Concerned

One-way Separated Bicycle Lane



A one-way separated bicycle lane is a bicycle facility along a roadway that is vertically separated from motor vehicle traffic by a curb, flex-posts, and/or parking. May be at sidewalk level, street level or intermediate height.

Design User: Interested but Concerned

Two-way Separated Bicycle Lane



A two-way separated bicycle lane is a bicycle facility along a roadway that is vertically separated from motor vehicle traffic by a curb, flex-posts, and/or parking. May be at sidewalk level, street level or intermediate height.

Design User: Interested but Concerned

Buffered Bicycle Lane



A buffered bicycle lane has a painted buffer to increase space between bicycle riders and hazards, such as passing traffic and car doors.

Design User: Interested but Concerned

Bicycle Lanes



A standard bicycle lane is on-street bicycle facility designated by striping, signing, and pavement markings. Bicycle lanes are separated from travel lane by a solid white line.

Design User: Somewhat Confident

Bicycle Boulevard



A bicycle boulevard is a street with low motorized traffic volumes and speeds, designated and designed to give bicyclists travel priority. Usually include traffic calming features to reduce speeds.

Design User: Somewhat Confident

Wide Shoulders



A wide shoulder is a paved space adjacent to vehicle travel lanes provide a space for bicyclists. Common on rural roads.

Design User: Highly Confident

PROPOSED PROJECTS

Table 8 through Table 12 provide locations and descriptions of facilities for the proposed AT Plan Routes.

Table 8: Proposed Shared Use Path Projects

Name/Location	Description	Miles
Navarre Ave from Miami St to S Lallendorf Rd	Long term; needs to be more separated moving east, especially east of I-280	2.3
S Wheeling St from Brown Rd to Seaman Rd		2.0
Michigan Ave from Waterville Monclova Rd to S 5th St	Replace south sidewalk with SUP, very wide buffer	0.9
Waterville Monclova Rd from Farnsworth Rd to Michigan Ave	Widen sidewalk to SUP	0.4
Angola Rd from Albon Rd to S King Rd	Connecting proposed facilities on Angola	0.7
Albon Rd from Monclova Rd to Angola Rd	Connected Holland to Monclova and rail trail	4.6
S Centennial Rd from Angola Rd to W Bancroft St		2.4
N Centennial Rd from W Bancroft St to Sylvania Ave		2.0
Monroe St from Silica Dr to Main St	In 2009 Sylvania Bicycle Network Plan. Long-term.	0.1
N Centennial Rd from Sylvania Rd to Erie St	Connect to existing and proposed facilities. Long-term.	2.0
Harroun Rd from Brint Rd to Monroe St	In 2009 Sylvania Bicycle Network Plan. Long-term.	0.7
Brint Rd from N McCord Rd to Harroun Rd	In 2009 Sylvania Bicycle Network Plan. Long-term.	0.5
W Bancroft St from University Parks Trail to Secor Rd	Existing gap in current bicycle lane - investigate existing facilities	1.4
Angola Rd from S Holland-Sylvania Rd to S Reynolds Rd	Widen sidewalk	1.1
W Central Ave from University Parks Trail to Douglas Rd	Proposed route on online map	3.4
Dorr St from Olympia Rd to Douglas Rd	Widen sidewalk. Proposed route on online map	3.5
South Ave from S Detroit Ave to S Hawley St	Eligible for road diet for bicycle lane. Speed limit 35 mph, will need traffic calming	1.3
Spielbusch Ave from Jackson St to Cherry St	Spielbusch Ave sidepath	0.3
Trail between Nebraska Ave and Dorr St	Trail between Nebraska Ave and Dorr St	0.5
Jackson St from Spielbusch Ave to N Summit St	Jackson Street bicycle lane. Long Term	0.4
Cherry St from Water St to Spielbusch Ave	Cherry St sidepath	0.5
Waterville-Monclova Rd from Michigan Ave to Monclova Rd	Existing/committed facility 2045 On the Move-Update 2020	1.2
Morrison Rd from Front Street to Fourth Street		0.2
N Ravine Parkway from Morrison Drive to Qualmish St		0.6

Name/Location	Description	Miles
Emerald Ave from Broadway St to Middlegrounds Metro Park	Committed facility - City of Toledo Bike Plan Connects to existing side path and bike boulevard along Ottawa St, this connects into Promenade Park	0.5
Shared use path through field connecting Fallen Timbers Lane to Wabash Cannonball Trail (South Fork)		0.5
Black Road from Stitt Road to Wabash Cannonball Trail (S Fork)		0.8
Fallen Timbers Lane from Russel Road to dead end		0.4
Russel Road from Wabash-cannonball Connector to Black Road		1.0
S Detroit Avenue from Anthony Wayne Trail to River Road		0.7
Arrowhead Drive from Indian Wood Circle to Illinois Avenue		0.9
Indian Wood Circle from Timberline Road to Ford Street		0.7
Shared use path loop within Indian Wood Circle		0.6
Ford Street from W Wayne Street to W William Street		0.3
Anthony Wayne Trail from Ford Street to Contant Street		0.6
S Detroit Avenue from Anthony Wayne Trail to River Road		0.7
Glendale Ave from Eastgate Rd to Charmaine Dr	Long-term road diet. Potential pilot project	2.0
Monclova Rd gap west of I-475	Fill in gap on Monclova Rd	0.5
Arlington Ave from west of S Detroit Ave to Francis Ave		0.3

Table 9: Proposed Buffered Bicycle Lane and Separated Bicycle Lane Projects

Name/Location	Type	Description	Miles
Lawrence Ave from Dorr St to W Bancroft St	Buffered Bicycle Lane	Lawrence Ave bicycle lanes	0.7
Oakwood Ave from Lawrence Ave to W Grove Place	Separated Bicycle Lane	Cross 75, access to art museum. Two-lane, one-way road. Convert one travel lane to two-way bicycle lanes	0.4
N Summit St from Cincinnati St to E Manhattan Blvd	Separated Bicycle Lane	Summit St separated bicycle lane	1.6

Table 10: Proposed Bicycle Lane Projects

Name/Location	Description	Miles
Navarre Ave from Miami St to S Lallendorf Rd	Long term; needs to be more separated moving east, especially east of 280	2.0

Name/Location	Description	Miles
S Wynn Rd from Pickle Rd to Starr Ave	Connecting proposed facilities	1.0
Starr Ave from S Wheeling St to S Whittlesey Ave	Connect Starr Ave existing bicycle lane to proposed facility on Wheeling	0.1
W Bancroft St from Secor Metropark to N Crissey Rd	Bicycle lane for recreational access	1.3
Main St from Brint Rd to Convent Blvd	Extension of Main St Bicycle lane	0.4
Main St from south of Monroe St to Erie St	Extend facilities on Main St north to Erie	0.3
Berdan Ave from Rohr Dr to Baltimore St	May need to lower speed limit at parts, some parking removal	2.8
Indian Rd from W Bancroft St to W Central Ave	Connect University of Toledo with Wildwood Park	1.8
Broadway from Harvard Blvd to Emerald Ave via Maumee Ave	Road diet / bicycle lanes for zoo access	2.9
Collingwood Blvd from W Bancroft St to Cherry St	Connection between the adjacent neighborhoods and downtown. Need crossing infrastructure at Bancroft and Delaware	1.4
Broadway Ave and S Summit St from Emerald Ave to Monroe St	Entrance to downtown. Eligible for road diet	0.9
Bennett Rd from Eleanor Ave to W Alexis Rd	To North Towne	1.5
Copland Blvd from S Byrne Rd to Anthony Wayne Trail	May need to remove on-street parking	0.6
Richards Rd from University Parks Trail to W Bancroft St	Access to University Parks Trail	0.1
Suder Ave from N Summit St to E Manhattan Blvd	Traffic calming needed	0.4
W Bancroft St from N Crissey Rd to N McCord Rd	Access to restaurants and neighborhood	3.0
W Bancroft St from Secor Rd to Upton Ave		1.7
W Bancroft St from Upton Ave to Lawrence Ave	May be eligible for road diet	1.3
Berdan Ave from Rohr Dr to Baltimore St		1.3
W Sylvania Ave from planned trail to Bennett Rd		2.0
N Fulton-Lucas Rd from Old State Line Rd to W Bancroft St		2.8

Table 11: Proposed Bicycle Boulevard Projects

Name/Location	Description	Miles
S Whittlesey Ave from Luverne Ave to Seaman Rd	Short-term, low stress alternative to Wheeling	0.9
Maple Dr and Silica Dr from Brint Rd to Monroe St	Signed route in Sylvania 2009 Bicycle Network Plan and 2035 TMACOG Bicycle Plan, Near school	0.9
Convent Blvd from Silica Dr to Main St		0.6
Manchester Blvd from Indian Rd to W Central Ave	Access to Westgate	0.8
Kenwood Blvd from Indian Rd to Douglas Rd	Traffic calming needed	1.5

S Hawley St from South Ave to Dorr St	Access to Community Center, Library. Signed bicycle route. Current speed limit 35 mph, needs traffic calming	1.5
Wells St from Dorr St to Oakwood Ave		0.2
Nantucket Dr from W Sylvania Ave to Monroe St		0.9
Woodley Rd from Van Dusen Way to W Sylvania Ave		1.5
Evergreen Rd from W Bancroft St to W Central Ave		1.1
Francis Ave from Arlington Ave to Wilton Street		0.1
Wilton St from Francis Ave to Woodsdale Ave		0.2
Oakwood Ave from Upton Ave to Lawrence Ave	One-way couplet with traffic calming	1.2
Smead Ave from Oakwood Ave to Lincoln Ave	Connection to proposed Oakwood Ave and Lincoln Ave one-way couplets	0.01
Lincoln Ave from Smead Ave to Lawrence Ave	One-way couplet with traffic calming	0.8
N Huron St from Market St to Cherry St		0.9
South Ave from S Detroit Ave to Woodsdale Ave	Bike connections east of Spencer and connects to existing Riverside Trail that runs along the Anthony Wayne Trail	0.3
S Prouty Avenue from Woodsdale Ave to S Hawley St	Bike connections east of Spencer and connects to existing Riverside Trail that runs along the Anthony Wayne Trail	0.9
Westland Ave from Berdan Ave to Marlow Rd		0.3
Marlow Rd from Westland Ave to Jackman Rd		0.5
Jackman Rd from Marlow Rd to Hillcrest Ave		0.03
Hillcrest Ave from Jackman Rd to Liberty Park		0.8

Table 12: Proposed Wide Shoulder Projects

Name/Location	Description	Miles
Corduroy Rd from North Stadium Rd to N Curtice Rd	Connect existing facilities	2.0
N Wheeling St from Seaman St to Front St		1.3
N Texas St from St Louis Ave to Wabash Cannonball Trail	Confirm proposed route; long-term should be more protected facility	2.7
Obee Rd from S Berkey-Southern Rd to S Eber Rd	Recommend more separated facility long-term	2.0
Neapolis Waterville Rd from Manore Rd to Schadel Rd	Wider shoulders, potential for lane	3.6

W Bancroft St from N Fulton-Lucas Rd to Secor Metropark	4.8
Waterville-Monclova Rd from Michigan Ave to Monclova Rd	3.1

PEDESTRIAN INFRASTRUCTURE

Along the roadway, pedestrian infrastructure is primarily provided in the form of sidewalks or shared use paths. The presence of sidewalks along a roadway corresponds to a 65 to 89% reduction in “walking along road” pedestrian crashes.⁹ Additional treatments can also be implemented along roadways or at crossing locations to improve the pedestrian experience, encourage more walking, and reduce the number of serious and fatal crashes that occur. As demonstrated in Chapter 2, Lucas County has one of the highest rates of serious injury and fatal pedestrian crashes in the state of Ohio. The map in Figure 25 shows where pedestrian crashes occurred from 2016-2020.



Lucas County: Bicycle and Pedestrian Crashes

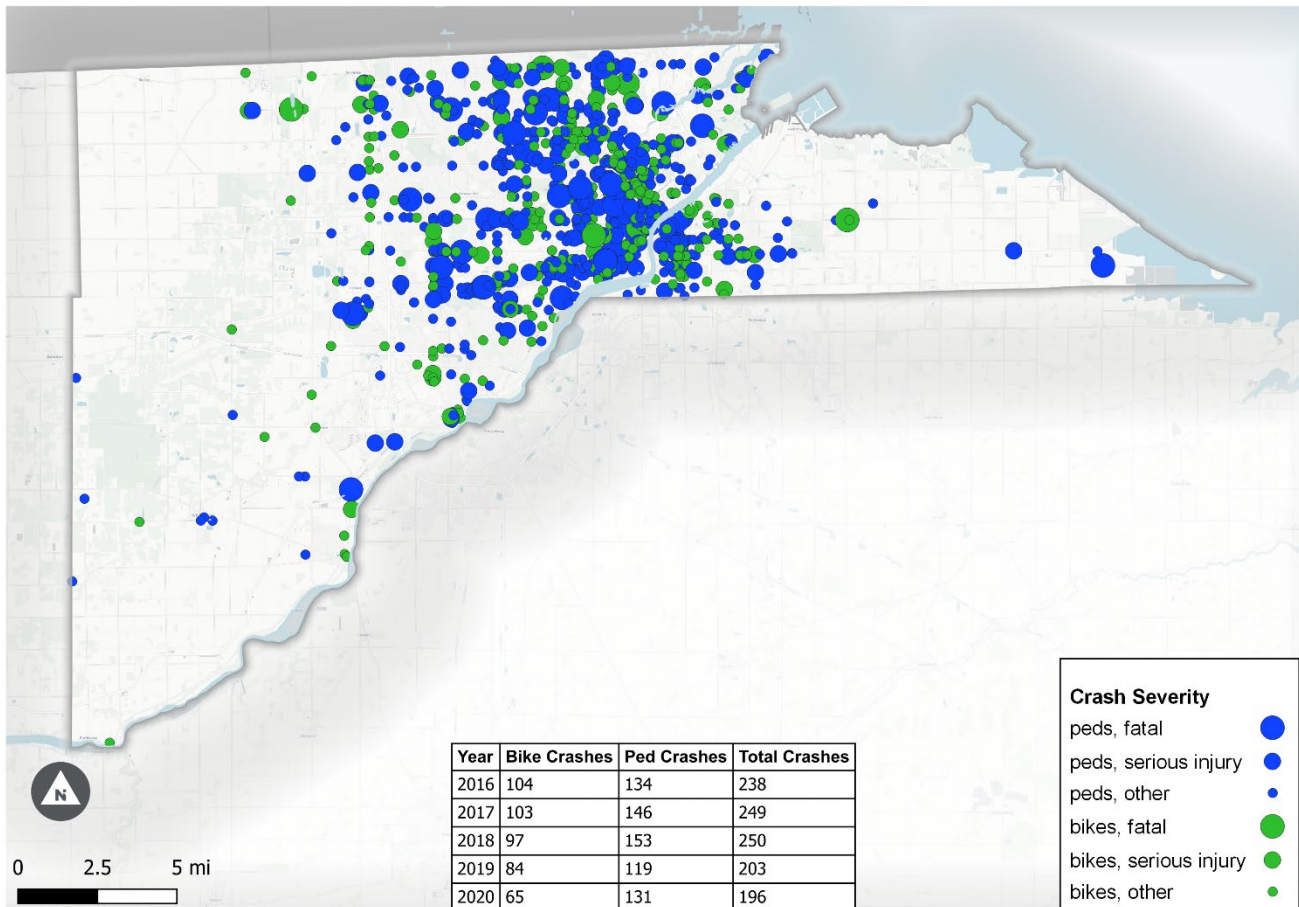


Figure 27: 2016 – 2020 Bicycle and Pedestrian Crashes

⁹ FHWA (2017). Desktop Reference for Crash Reduction Factors, FHWA-SA-08-011, Table 11. Referenced in <https://safety.fhwa.dot.gov/provencountermeasures/walkways/>

Pedestrian safety, and road safety in general, should be viewed as a shared responsibility between policymakers, transportation planners/designers and road users. System designers and policymakers are responsible for the safe design and operation of the road system. Road users are responsible for following the rules for the safe use of the road system. However, all humans are prone to make mistakes, and approaching road safety as a shared responsibility instead of putting the onus on individual users to behave in a safe way can save lives.

SAFE SYSTEM APPROACH

The Safe System approach is a holistic method to eliminate fatal and serious injuries for all road users. The Safe System approach helps agencies improve transportation safety by considering conditions and risk factors, instead of purely relying on crash history, when deciding where to make safety improvements.

By understanding roadway conditions that are unsafe for pedestrians, such as lack of sidewalks, high speeds, or long crossing distances, Lucas County can make informed decisions on where to improve safety for people walking. The Need and Demand maps in Chapter 2 can also inform where to make pedestrian infrastructure investments with the most benefit. This maximizes safety benefits for pedestrians while minimizing costs.

The City of Toledo is making pedestrian safety improvements at 76 intersections with high-risk characteristics through ODOT’s Pedestrian Safety Improvement Program (PSIP). These locations are shown in Figure 26 and more information about the project is available on [ODOT’s website](#).

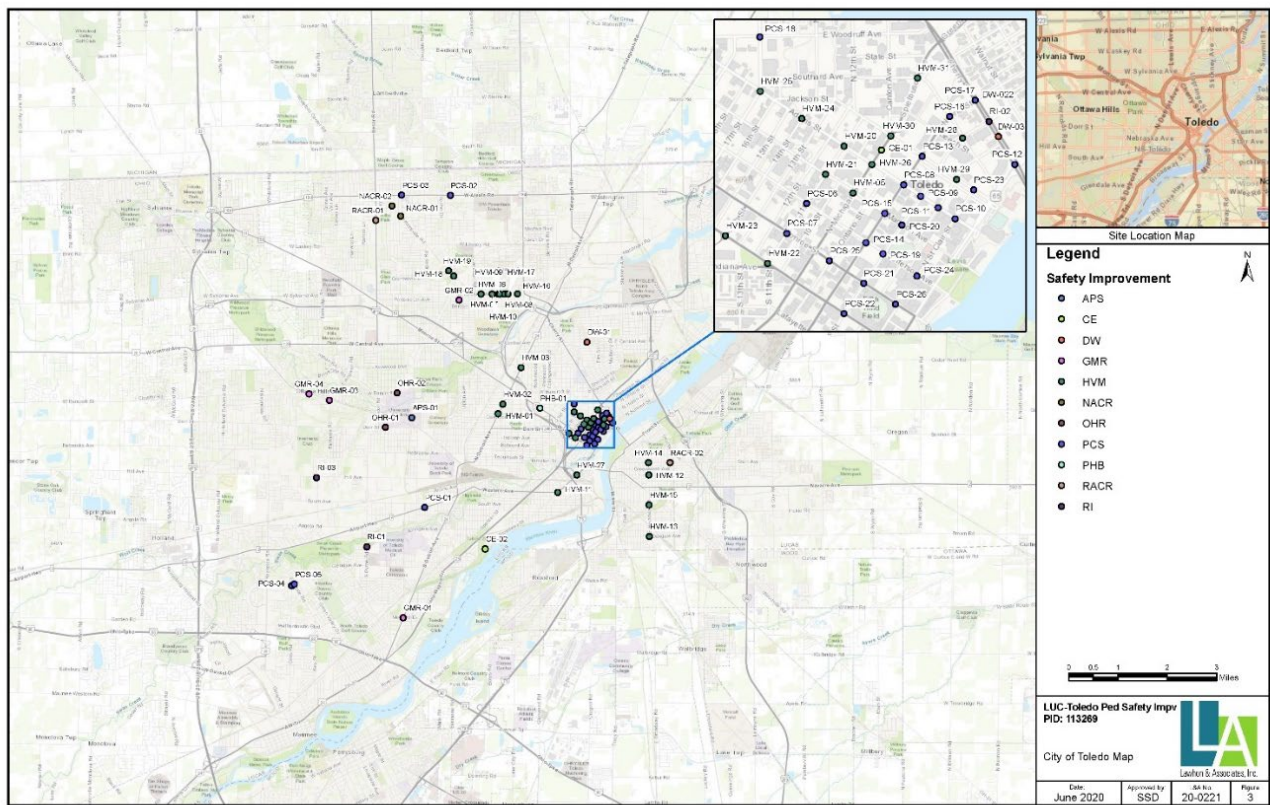


Figure 28: 2019 PSIP improvement locations in Toledo

To improve pedestrian safety and increase the number of people walking, Lucas County would benefit from a coordinated analysis to identify other high-risk locations and work quickly to install pedestrian safety treatments like the ones in the toolkit below. These treatments improve safety at intersections and along roads by slowing drivers and improving pedestrian visibility. Implementation of these treatments will help pedestrians of varying abilities access their daily destinations such as schools, jobs, grocery stores, parks, and social gatherings. Strengthening existing policies and development standards to include these treatments would ensure new projects support walking from the start and avoid the cost of retrofitting facilities later on.

PEDESTRIAN SAFETY TOOLKIT

<p>Sidewalks</p> 	<p>High Visibility Crosswalk</p> 
<p>Sidewalks are pedestrian paths. Sidewalks should be 5+ feet wide and be connected to provide continuous routes to destinations.</p>	<p>High-visibility crosswalks use parallel markings that motorists see more easily compared to traditional crosswalk markings.</p>
<p>Raised Crosswalk</p> 	<p>Pedestrian-Scale Lighting</p> 
<p>A raised crosswalk is a crosswalk on top of a speed hump. They improve visibility and calm traffic.</p>	<p>Lighting illuminates crossings and pathways to improve comfort and safety for people walking in low light hours.</p>

Pedestrian Countdown Signal



Pedestrian countdown signals at signalized crossings indicate how many seconds remain to cross the street before the signal changes.

Audible Pedestrian Signals



Audible pedestrian signals vibrate and create a sound to help people with vision disabilities know when to cross the street.

Curb Ramps



Curb ramps are sloped areas at crossings that connect the street to the sidewalk. The ADA requires curb ramps to have level landings and detectable warning surfaces.

Curb Extensions



Curb extensions extend into the street, shorten crossing distances, and improve visibility for both drivers and pedestrians. A curb extension creates additional space for curb ramps.

Rectangular Rapid Flashing Beacons



A rapid flashing beacon is a warning device used at mid-block crossings. Pedestrians activate flashing lights to warn drivers that they are crossing the street.

Pedestrian Refuge Island



Refuge islands in the middle of the road calm traffic, increase pedestrian visibility, and provide people walking with a waiting area, allowing them to cross the street in stages.

PROGRAM RECOMMENDATIONS

Establishing safe and convenient active transportation infrastructure is critical to improving the walking and bicycling environment. But without programs and policies in place to support active transportation, infrastructure projects will likely only attract those who already walk and bike. A variety of programs and policies can help establish a culture of walking and biking at all levels. Cross jurisdictional coordination is essential for active transportation to improve, and the following recommendations listed in Table 13 encourage municipalities to integrate efforts.

Table 13: Education Recommendations

Category	Program Name	Program Lead	How does this program support active transportation?
Education	Increase opportunities for driver and bicyclist education across the County, emphasizing the rights of bicyclists and pedestrians as well as safe practices	We Are Traffic, YMCA, Toledo Bikes, Safe Kids - Greater Toledo, Lucas County Safe Communities	Teaching people of all ages about their transportation options and the benefits of walking and bicycling makes them more aware of their transportation habits. Education also encourages safe behaviors as a driver, bicyclist, and/or pedestrian. Group bicycle rides, classes, workplace trainings, and online resources are all opportunities to educate Lucas County residents. See an example from Fort Collins, CO.
Education	Establish a program that teaches bicycling skills in all elementary schools	Safe Routes to School, School Districts, Safe Kids Greater Toledo	Teaching students to ride a bicycle and the rules of the road creates a generation that is more confident in bicycling for recreation and transportation. This program could be modeled off a similar program implemented in Washington, DC called Biking in the Park.

Category	Program Name	Program Lead	How does this program support active transportation?
Education	Continue to incorporate bicycle and pedestrian education into school curricula	Safe Routes to School, School Districts, Safe Kids Greater Toledo	When young people receive training on how to safely bicycle and walk while interacting with other road users, they become empowered to use active transportation regularly. Safe Routes to School concepts can be used during physical education or integrated with other classroom topics.
Education	Ensure walking and bicycling information is easily available on city and county websites	YMCA, TARTA, County and local jurisdictions	Routes, safety tips, and other information helps to bring awareness about transportation options for residents and visitors.

Table 14: Policy Recommendations

Category	Program Name	Program Lead	How does this program support active transportation?
Policy	Adopt a county-wide Safe System approach to road safety.	County Commissioners, Public Works and Transportation Department Leadership, City and County Engineers	A Safe System Approach assumes shared responsibility for road safety and assesses risk factors to eliminate serious and fatal crashes. Installing or improving pedestrian and bicyclist facilities based on a Safe System approach will help to address safety at locations with a high risk for crashes, whether or not those locations have a history of crashes. The Safe System approach is central to Vision Zero. The City of Toledo signed a Vision Zero commitment in 2021 and is pursuing a Vision Zero Action Plan. Similar strategies can be applied elsewhere in the county to create safer places to walk and bike and enable more people to use active transportation.

Category	Program Name	Program Lead	How does this program support active transportation?
Policy	Establish guidance on county-wide signed bicycle routes, to be used by all jurisdictions	TMACOG, We Are Traffic, City and County Engineers	Signed bicycle routes use wayfinding to guide bicyclists along the route. Because Lucas County is made up of many local jurisdictions, signed bicycle routes may be inconsistent. Establishing a County-wide guide on signed bicycle routes and their design, funding, and implementation will improve these facilities for long-time riders and new visitors alike.
Policy	Apply best practices to reallocate road space for walking and biking facilities	TMACOG, City and County Engineers	Wide roads with fast speeds are uncomfortable for pedestrians and bicyclists. Pursuing road diets on these roads can reallocate space for protected bicycle facilities and reduce speeding. Developing guidance and identifying roads that are eligible for road diets would help prepare jurisdictions to make changes during routine repaving projects. Also, could refer to ODOT Multimodal Design Guide section 7.5 Reallocating Street Space for guidance related to road diets.

Category	Program Name	Program Lead	How does this program support active transportation?
Policy	Establish micromobility regulation to protect riders and other road users	City of Toledo, TMACOG	<p>Scooters and bicycle share provide additional mobility options and new challenges for active transportation. Regulation of operations will help to determine success of micromobility in Lucas County. Regulation may include:</p> <ul style="list-style-type: none"> ▪ Designate parking areas for scooters. Improper scooter parking disrupts the pedestrian pathways and impedes access. ▪ Implement “no-park” zones, especially areas with high pedestrian activity. ▪ Require micromobility operators to share data to understand usage trends.
Policy	Continue to advocate for changes to the state vehicle code to clarify bicyclist rights and responsibilities and protect bicyclists in crosswalks	We Are Traffic, TMACOG	Although classified as vehicles, bicyclists are much more vulnerable road users. Currently, bicyclists using crosswalks are not afforded the same protections as pedestrians using crosswalks. Changes to the code would help protect the rights of bicyclists using crosswalks.

Category	Program Name	Program Lead	How does this program support active transportation?
Policy	Implement additional policies that support pedestrian infrastructure	TMACOG, Local jurisdictions	<p>Current design guidance provides information on how to build the pedestrian network, but a set of pedestrian network policies will help the city know what, when, and where to make those investments. Policies may cover:</p> <ul style="list-style-type: none"> • Sidewalk standards for areas with high pedestrian volumes, especially to allocate more space for pedestrians from the right-of-way. • Curb extensions on streets with on-street parking to better define on-street parking, reduce crossing distances, and make pedestrian more visible to motorists. • Maximum distance between pedestrian crossings to encourage pedestrians to cross at designated locations. • Mid-block crossing decision process and criteria.

Table 15: Community Support Recommendations

Category	Program Name	Program Lead	How does this program support active transportation?
Community Support	Continue to recruit members for the Active Transportation Plan Steering Committee	Health Department, YMCA	Work to increase diverse representation on the Steering Committee to match county demographics.
Community Support	Strengthen relationships with elected officials	Health Department, YMCA	Elected officials can support policies and programs that support active transportation. Community events, such as Walk to School Day, Bike to School Day, Ride of Silence, May Bike Month events, a bicycle ride, or a walk audit, are opportunities to develop relationships and demonstrate need to elected officials.
Community Support	Increase publicity and events for Bike Month	TMACOG, Metroparks, YMCA, Health Department, Safe Kids Greater Toledo, City of Toledo, Worksites	Bike to Work Day and Bike Month are annual campaigns, usually held in May, to encourage people to bicycle to work and for other trips. These campaigns often include highly publicized rides with elected officials, stations with information about bicycle commuting and giveaways. Bicycle repair stations, an annual bicycle ride or race, educational activities, and virtual communications can bolster the County's existing Bicycle Month activities.
Community Support	Demonstration Project	Health Department, Public Works, and Transportation Departments	Leverage Creating Healthy Communities funding to plan and implement a demonstration project of one of the recommendations in this plan. The demonstration project is a way to introduce changes on a temporary basis and see the effects. They can build popular support for more permanent changes.

Table 16: Data Recommendations

Category	Program Name	Program Lead	How does this program support active transportation?
Data	Perform a county-wide risk analysis to identify roadways and intersections in need of pedestrian safety improvements.	TMACOG, ODOT	Building on the policy recommendation to adopt a Safe System approach, the risk analysis can identify locations for improvements before crashes occur, saving lives and making streets and intersections safer for walking and bicycling.
Data	Collect county-wide bicycle and pedestrian counts.	TMACOG, Local jurisdictions, Metroparks	A growing number of cities, counties, and states conduct bicycle and pedestrian counts to track ridership, usage of facilities, and other purposes. Best practices recommend installing the permanent counter in a visible, high-use location, such as along a trail or on a bicycle facility.
Data	Continue to publicize the City of Toledo's Service Request Dashboard .	City of Toledo	Toledo residents can report traffic concerns, report sidewalk condition concerns, and other walking- or biking-related issues. The Dashboard is a centralized place for these concerns and helps to keep the City accountable for safety issues.
Data	Inventory on pedestrian and bicycle amenities	TMACOG, Metroparks, Local Jurisdictions	Pedestrians and bicyclists traveling through the county and residents who live within the county often do not know where all the available pedestrian and bicycle amenities are located (i.e. restrooms, bicycle parking, bike racks, benches, fix-it stations, trailheads, etc.). Creating an inventory on the bicycle and pedestrian amenities that throughout the county will allow pedestrians and bicycles to benefit from the amenities that are in place and create a more enjoyable experience for all users.

ADDITIONAL PROGRAM RESOURCES

Strong Towns is a 501(c)(3) nonprofit media advocacy organization that seeks to replace the development pattern that was created post-war and create a safe, livable, and vibrant city. Strong Towns believes this can be accomplished through ending the expansions of highways, revealing government accounting practices, allowing incremental housing development, creating safe and productive streets that revert away from the automobile and parking mandates and subsidies, and instead focusing on the pedestrians and other modes of transportation.¹⁰

Smart Growth Coalition is an advocacy and technical assistance organization that assists communities to create healthy, affordable, and vibrant communities.¹¹ They are an interdisciplinary organization, working in climate change, racial equality, helping create healthy communities, land use and development, economic development, and transportation.¹²

The National Complete Streets Coalition is a program within Smart Growth America that advocates for Complete Streets across the United States.¹³ The National Complete Streets Coalition has created best practices and an overall framework for creating a Complete Streets policy, as well as a scoring rubric to understand whether a municipalities Complete Streets policy is a strong policy. Municipalities can use the National Complete Streets Coalition's rubric to score their policy and then make changes before formally adopting it. Once their policy is adopted, the National Complete Streets Coalition reviews the policy and records their score.

¹⁰ Strong Towns. <https://www.strongtowns.org/about>

¹¹ Smart Growth America. "About Us". <https://smartgrowthamerica.org/about-us/>

¹² Strong Towns. "Our Work". <https://smartgrowthamerica.org/our-work/>

¹³ National Complete Streets Coalition <https://smartgrowthamerica.org/program/national-complete-streets-coalition/>

CHAPTER 5

IMPLEMENTATION



The implementation of this Plan is a long-term investment in maintaining and expanding the use of active transportation in Lucas County. As the County and local governments work together to implement the plan, they need to consider available resources, concurrent construction projects and planning efforts, and public support. This chapter describes the priorities, funding options, and performance measures that will help the community implement and monitor the success of this Plan over time.

PROJECT PRIORITIZATION

The recommended projects in this Plan range from signage costing a few hundred dollars to produce, to longer shared use paths that will cost millions of dollars and take many years to implement. It can be difficult to accurately compare the potential costs and benefits of such different projects. A data-informed project prioritization process can determine which projects align with stakeholder and community priorities and are best suited to move forward given limited resources.

A data-informed project prioritization process identifies common **factors** (broad themes related to walking and bicycling) and **variables** (measurable characteristics related to each factor) to calculate a score for each recommended project. Through this planning process, members of the Steering Committee assigned **weights** to six prioritization factors shown in Table 17. The factors Safety and Connectivity both ranked high and taken together would account for almost 50% of a project's score. These weights also reflect the responses from the public survey, where top response for improving bicycling was more continuous facilities and the top responses for improving walking were more and better maintained sidewalks, crosswalks, and lighting.

Many of the previously planned active transportation projects in Lucas County have already been prioritized by the implementing agency or TMACOG, and prioritization scores alone do not accurately reflect the order in which projects will be implemented. Projects may be implemented with routine street resurfacing, in coordination with development/redevelopment, or based on safety concerns. As the Plan is implemented, local priorities may change as new opportunities become available or conditions change. Plan priorities should be revisited and reconfirmed on a regular basis.

Table 17: Prioritization Factors and Weights

Factor	Guiding Question	Data Source	Steering Committee Weight
Safety	Where are the roads and intersections that pose the greatest risk?	Road centerline data, Crash Data	27%
Connectivity	What projects augment connectivity for our current network?	<ul style="list-style-type: none"> • Online and paper map comments • Existing and planned projects 	20%
Stakeholder Input	Where did we receive the most comments?	Online and paper map comments	15%
Need/Equity	What areas have the highest need?	Walk.Bike.Ohio Needs Analysis	14%
Demand/Trip Potential	What areas have the highest demand?	Walk.Bike.Ohio Demand Analysis	14%
Ease of Implementation	What can we implement most quickly? What funding opportunities are most accessible?	<ul style="list-style-type: none"> • Project type • Planned / committed projects 	10%

To perform a full, data-driven prioritization of all bicycle and pedestrian projects in Lucas County, all projects could be assessed using the [Active Trans Priority Tool](#). This tool is published by the National Cooperative Highway Research Board (NCHRP) and includes a guidebook and programmable spreadsheet for ranking projects.

DEMONSTRATION PROJECTS

Active transportation projects can take many years to go from concept to completion. Many of them require repurposing existing elements of the streetscape in new ways, which can cause concerns among the street users, adjacent residents and businesses, and the agencies that own and maintain the roadway. Demonstration Projects, or temporary installations of the proposed changes, are a low-cost way to test and refine a proposed concept long before permanent construction.

Demonstration Projects vary in size and complexity, from taking over a single parking space with café tables for a weekend to striping a temporary bike lane for several blocks over the entire summer. They can be part of a larger community event or stand on their own. Common materials used for demonstration projects include traffic cones, duct tape, chalk, and cardboard signs. For the best outcomes, Demonstration Projects should secure permission from the appropriate agency, notify community members in advance, and collect baseline data (i.e., bicycle and pedestrian counts, traffic speeds) before, during and after the demonstration.

Funding for Demonstration Projects can come from a variety of sources, including many non-transportation sources such as Creating Healthy Communities grants and partnerships with local business that donate supplies or volunteer time to help with set up and take down. Table 18 includes potential Demonstration Projects to consider from the recommendations in this plan. Pedestrian recommendations from local Safe Routes to School plans should also be considered.

Additional resources for planning demonstration projects:

- [Street Supplies Community Guidance \(NOACA\)](#)
- [Tactical Urbanist's Guide](#)
- [Pop-Up Projects: A Community Guide for Fort Worth](#)

Table 18: Potential Demonstration Projects

Location	Project Type	Basic Description
Glendale Avenue Toledo Broadway St (River Rd to Sidewalk Path)	Separated Bike Lanes	Repurpose outside travel lanes for people biking and rolling. Use plastic delineator posts and temporary pavement markings, leaving gaps at bus stops.
Main Street (Brint Rd to Convent St) Sylvania	Bike Lanes	Narrow travel lanes to 10 ft wide. Use plastic delineator posts and temporary pavement markings, leaving gaps at bus stop.



Figure 29: Bike fix-it/helmet fitting event at Greenwood Elementary (Washington Local School District).

FUNDING STRATEGIES

Active transportation projects comprise a fraction of overall transportation network construction and maintenance costs. While active transportation infrastructure generally does not serve as many users as highways, bridges, and other critical infrastructure, it can have a substantial positive effect on local economies and quality of life. Additionally, providing opportunities for active living promotes public health and may reduce the burden on tax-payer funded healthcare systems over time. In this light, active transportation infrastructure is a critical component of a complete transportation network and results in a positive return on investment for communities that fund such projects.

Several state and federal funding sources can be used to supplement local funding sources to build out the proposed bicycle network, apply the tools in the pedestrian safety toolkit, and fund related programming efforts. Table 19 lists the primary funding sources for active transportation projects in Ohio; click on the name of each funding source to access web pages with further information. In addition to the funding sources listed below, TMACOG also distributes Congestion Mitigation and Air Quality Program (CMAQ) and Surface Transportation Block Grant Program (STBG) funds; projects with shared use paths score well under CMAQ, and projects with Complete Streets elements score well under STBG. As part of the statewide Walk.Bike.Ohio Plan, ODOT published a [Funding Overview Report](#) that provides more details on types of funding available, schedules, and eligibility requirements.

Table 19: Primary Active Transportation Funds in Ohio

Funding Source	Distributed By	Eligible Project Examples	Eligible Project Sponsor
<u>Transportation Alternatives</u>	Metropolitan Planning Organization	Bicycle & pedestrian facilities Safe routes for non-drivers Conversion & use of abandoned railroad facilities Overlooks & viewing areas	Local governments
<u>Safe Routes to School</u>	ODOT	Infrastructure Non-Infrastructure School Travel Plan assistance	Local governments (infrastructure) Local governments, school or health district, or non-profit (non-infrastructure)
<u>Highway Safety Improvement Program</u>	ODOT (Coordinate with local ODOT District to submit a safety study)	Signalization Turn lanes Pavement markings Traffic signals Pedestrian signals/crosswalks Bike lanes Road diets Closing sidewalk gaps	Local governments
<u>Recreational Trails Program</u>	Ohio Department of Natural Resources (ODNR)	New recreational trail construction Trail maintenance/restoration Trailside and trailhead facilities Purchase/lease of construction & maintenance equipment Acquisition of easements Educational programs	Local governments State and federal agencies Park districts Conservancy districts Soil and water conservation districts Non-profits
<u>Clean Ohio Trails Fund</u>	ODNR	New trail construction Land acquisition for a trail Trail planning/engineering and design (must include construction)	Local governments Park districts Conservancy districts Soil and water conservation districts Non-profits
<u>Clean Ohio Green Space Conservation Program</u>	Ohio Public Works Commission (OPWC)	Open space acquisition including easements Bike racks Kiosks/Signs Hiking/Biking trails Pedestrian bridges Boardwalks	Local governments Park districts Conservancy districts Soil and water conservation districts Non-profits



Figure 30: Walking school buses are a fun and safe strategy to encourage students to walk to school.

PERFORMANCE MEASURES

Measuring the performance of active transportation networks is essential to ongoing success. Bicycle and pedestrian counts, crash records, and other data contribute to a business case for continued improvement of and investment in multimodal infrastructure.

As recommendations are implemented, Lucas County must be able to measure whether these investments are paying active transportation dividends (i.e., more people walking and bicycling). An affirmative answer reinforces the Plan's legitimacy and provides evidence that future investments will also yield positive results. A robust performance measures program includes establishing baseline measurements, performance targets, data collection frequency, and data collection and analysis responsibility.

The performance measures in Table 20 have been identified to chart progress towards this Plan's goals of making walking and bicycling safe, connected, and comfortable. Lucas County should adopt baseline targets and revisit these metrics as new plans and priorities occur. Data on these measures should be documented and published for public review annually.

Table 20: Performance Measures

HEALTH & SAFETY: Encourage the development of a safe and context-appropriate bikeway and pedestrian system for all users in Lucas County including special populations.				
Subgoal	Performance Measure	Data Source	Trend over time	Baseline
Reduce the amount of vehicular traffic by providing opportunities to utilize alternative modes of transportation.	Traffic counts Level of Stress Measure street and intersection service	ODOT	Decrease	Need to identify locations for counts
	Non-motorized counts	TMACOG	Increase	Need to identify locations for counts
	Mode Split (% of people walking, biking, taking transit)	American Community Survey , US Census	Increase in walking, biking, taking transit	<ul style="list-style-type: none"> • 2.5% walking • 0.4% biking • 1.3% taking transit (2019, 1-year estimates)
Improve the overall well-being of Lucas County residents and minimize health care costs by promoting an active lifestyle that will serve to improve the resident's physical and mental health.	Health Care Costs	Ohio State Health Assessment, 2019	Decrease	\$9,993 Standardized Risk-Adjusted Costs per Medicare Beneficiary
	Levels of physical activity	Lucas County Community Health Assessment, 2019-2020	Increase	55% of adults engaged in some type of physical activity or exercise for at least 30 minutes 3 or more days per week.
Reduce the number and severity of crashes involving pedestrians and bicyclists.	Severe and fatal bicycle and pedestrian crashes	ODOT	Decrease	<ul style="list-style-type: none"> • Bicyclists: 10 serious injuries, 1 fatality (2019) • Pedestrians: 25 serious injuries, 6 fatalities (2019)

LIVABILITY: Create a framework for a comprehensive, community-driven, transportation network for all users, of all ages.

Subgoal	Performance Measure	Data Source	Trend over time	Baseline
Increase opportunities for physical activity with well-designed sidewalks, on-street bicycle facilities, and multiuse trails.	Network miles	<ul style="list-style-type: none"> • TMACOG • Local government GIS layers 	Increase	167 miles
	Percent of previously planned bicycle network that is constructed	<ul style="list-style-type: none"> • TMACOG • Local government GIS layers 	Increase	57.4% previously planned routes 42.4% total planned, including AT Plan routes
	Level of Traffic Stress	<ul style="list-style-type: none"> • TMACOG 	Increase in low stress routes	TBD

EQUITY: Create a more accessible community for all through development of interconnected pedestrian and bicycle facilities.

Subgoal	Performance Measure	Data Source	Trend over time	Baseline
Increase connectivity of active transportation facilities to improve access to job opportunities, medical care, and local commercial services.	% of population that lives within ¼ mile of bicycle facilities	<ul style="list-style-type: none"> • TMACOG • Local government GIS layers 	Increase	26.2% of population
	Network connectivity	<ul style="list-style-type: none"> • Bicycle Network Analysis (BNA) Score, People for Bikes 	Increase	17 out of 100 (for City of Toledo, 2021)

ADOPTING AND UPDATING THE PLAN

While this Plan is ultimately to be adopted by the Lucas County Commissioners, its successful implementation will be dependent on the continued cooperation and resources of many other organizations, including:

- City of Toledo
- Individual jurisdictions
- TMACOG
- Toledo Lucas County Health Department
- TARTA
- School Districts
- Ability Center
- YMCA

Many of these organizations were directly involved in the development of this plan, and its implementation will help them achieve their shared goals of a healthier, more prosperous Lucas County. Signed endorsement letters can be found in the Appendix.

This Active Transportation Plan is designed to be flexible, providing sufficient direction while also encouraging the County, local governments, and other stakeholders to respond as opportunities arise and conditions change over time. For this reason, the Plan should be viewed as a “living document” that is re-evaluated and expanded over time. A formal review and progress update is recommended in five years, with a particular focus on updating the recommended bicycle network and priority projects.



Figure 31: The Active Transportation Plan will be most successful through continued collaboration of organizations across Lucas County.

APPENDIX



SURVEY QUESTIONS

Lucas County is creating an Active Transportation Plan to improve the County's streets for pedestrians and bicyclists. Your response to this survey will ensure the Plan represents what the community wants and needs. Check out livewelltoledo.org/local-active-transportation to keep up to date with walking and bicycling in Lucas County.

1. What is your zip code?

2. What is your age?

- Under 10
- 11 to 15
- 16 to 18
- 19 to 24
- 25 to 34
- 35 to 44

- 45 to 54
- 55 to 64
- 65 to 74
- 75 to 84
- Above 85
- Prefer not to answer

3. How do you describe your race?

- American Indian or Alaska Native
- Asian
- Black or African American
- Native Hawaiian or Other Pacific Islander
- White
- Multi-racial
- Prefer not to answer

4. Are you Hispanic/Latino(a)?

- Yes
- No
- Prefer not to answer

5. What gender do you identify as?

- Female
- Male
- Transgender
- Gender non-conforming
- Prefer not to answer

6. Do any of the following apply to you? (check all that apply)

- Hard of hearing
 - Low vision
 - Use a wheelchair or walker
 - Other (please specify)
-

7. In your household, how many vehicles are owned, leased, or available for regular use?

- None
- One
- Two
- Three or more

8. How often do you walk for transportation?

- Most days
- Once a week
- Once a month
- Less than once a month

9. Why do you walk? Check all that apply.

- Recreation, health, or exercise
- Shopping or errands
- Commute to school or work
- Social or entertainment
- Get to a bus stop
- I don't walk
- Other (please specify) _____

10. What would improve walking in Lucas County? Select the three (3) most important improvements to you.

- Better maintained sidewalks
 - Addition of sidewalks where there are none
 - Pedestrian signals and improved crosswalks
 - More ADA accommodations (e.g., curb ramps)
 - Availability of vehicle parking near trails
 - Lighting
 - Wayfinding signage
 - No improvements necessary
 - Other (please specify)
-

11. How often do you ride a bike for transportation?

- Most days
- Once a week
- Once a month
- Less than once a month

12. Why do you bike? Check all that apply.

- Recreation, health, or exercise
 - Shopping or errands
 - Commute to school or work
 - Social or entertainment
 - Get to a bus stop
 - I don't bike
 - Other (please specify)
-

13. Which of the following best describes you?

- A confident bicyclist who rides on busy streets
 - Occasional or recreational bicyclist who rides mainly on trails
 - Would ride a bike if there were safer facilities
 - I don't ride a bike and don't want to in the future
 - Other (please specify)
-

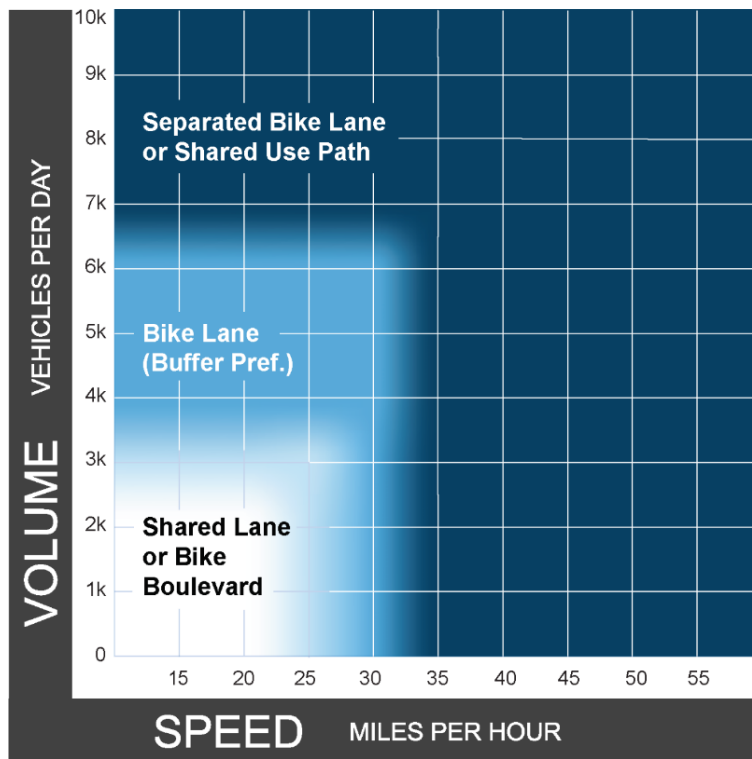
14. What would improve biking in Lucas County? Select the three (3) most important improvements to you.

- Signed bike routes
 - Designated bike lanes
 - Protected bike lanes (i.e., physical barrier between motor vehicles and bike lanes)
 - More off-road trails
 - More bicycle parking
 - More vehicle parking near trails
 - Continuous bike routes that connect me to places I want to go
 - Road surface improvements (reduce potholes, etc.)
 - No improvements necessary
 - Other (please specify)
-

BICYCLE FACILITY SELECTION MATRICES

Both traffic volume and traffic speed are important considerations when choosing an appropriate bikeway type for a given location. The Bicycle Facility Selection Charts combines both speed and volume into a two graphics to help identify an appropriate treatment for a given roadway assuming different design users. Figure 5 can be used for facilities for Interested but Concerned design users, while Figure 6 is used for wide shoulders on rural roads, which are most often used by Somewhat Confident or Highly Confident design users. Research indicates that providing less protection/separation on roads with higher speeds and volumes will result in fewer people comfortable with bicycling on those roads.

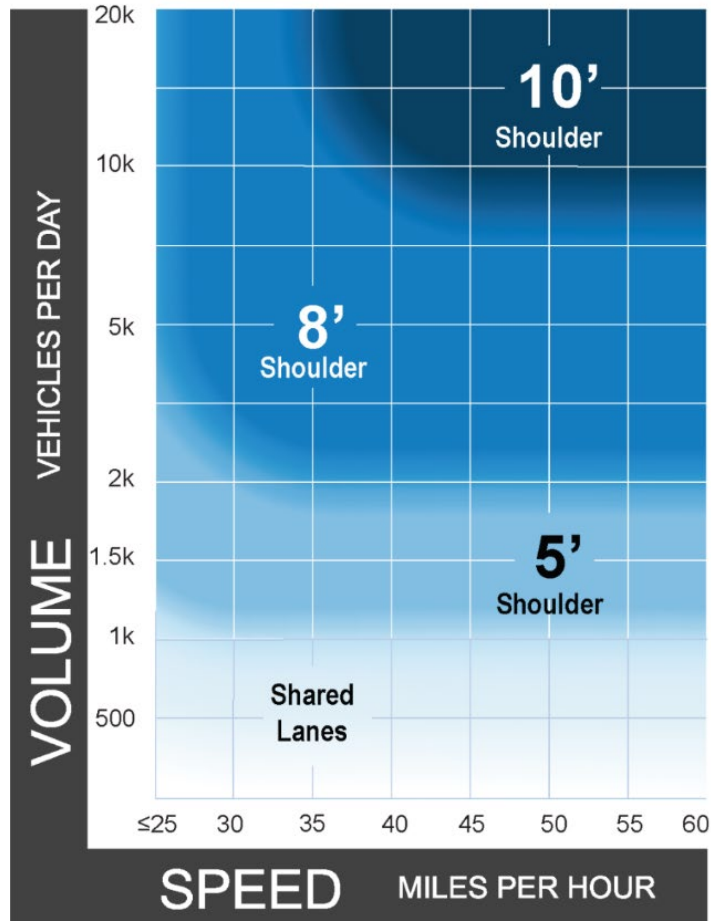
For more information on bicycle user types and bicycle facility selection, see the [FHWA Bikeway Selection Guide](#) (2019).



Notes

- 1 Chart assumes operating speeds are similar to posted speeds. If they differ, use operating speed rather than posted speed.
- 2 Advisory bike lanes may be an option where traffic volume is <3K ADT.
- 3 See page 32 for a discussion of alternatives if the preferred bikeway type is not feasible.

Figure 32: FHWA Bikeway Facility Matrix: Preferred Bikeway Type for Urban, Urban Core, Suburban and Rural Town Contexts (Design User: Interested but Concerned)



Notes

- 1 This chart assumes the project involves reconstruction or retrofit in constrained conditions. For new construction, follow recommended shoulder widths in the AASHTO Green Book.
- 2 A separated shared use pathway is a suitable alternative to providing paved shoulders.
- 3 Chart assumes operating speeds are similar to posted speeds. If they differ, use operating speed rather than posted speed.
- 4 If the percentage of heavy vehicles is greater than 5%, consider providing a wider shoulder or a separated pathway.

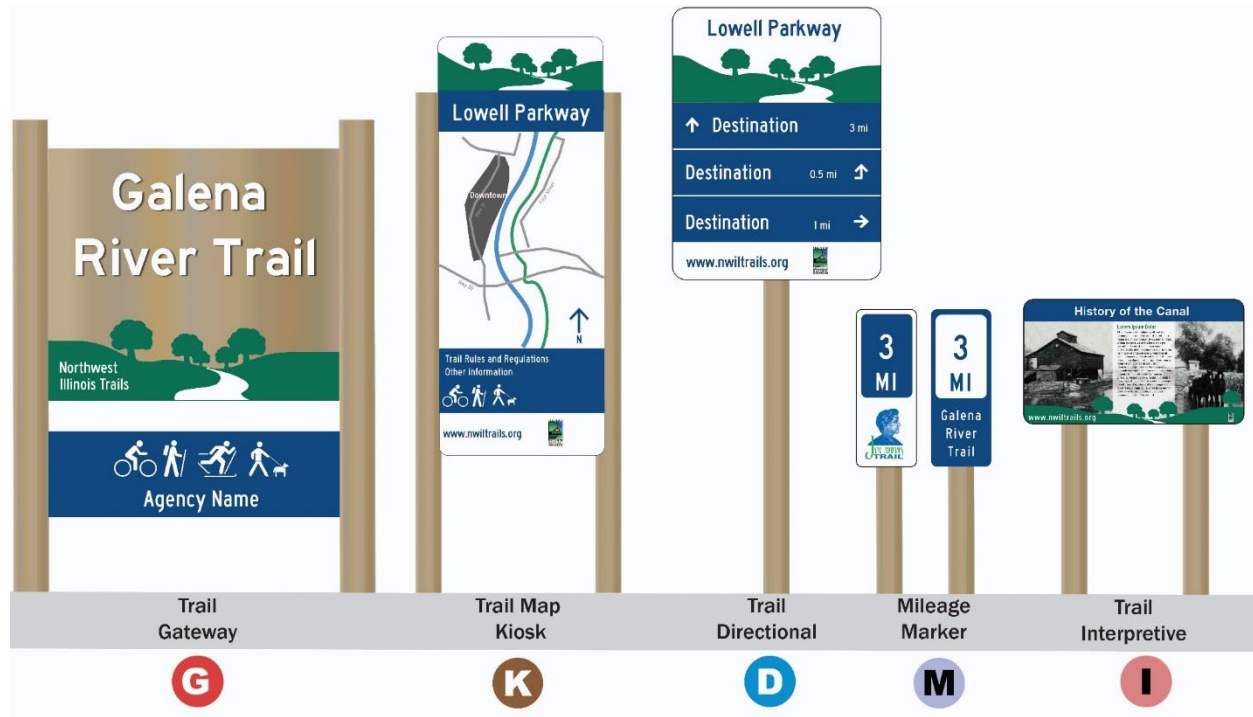
Figure 33: FHWA Bikeway Facility Matrix: Preferred Shoulder Widths for Rural Roadways (Design User: Somewhat Confident or Highly Confident)

Additional design guidance for pedestrian and bicycle facilities can be found at:

- » [Safe Transportation for Every Pedestrian \(Federal Highway Administration\)](#)
- » [Guide for Improving Pedestrian Safety at Uncontrolled Crossing Locations \(FHWA\)](#)
- » [Small Town and Rural Design Guide \(FHWA\)](#)
- » [Urban Bikeway Design Guide \(NACTO\)](#)
- » [Bicycle and Pedestrian Resources for Engineers \(ODOT\)](#)

WAYFINDING

Wayfinding provides information on routes and directs people to destinations. Signs and pavement markings can be used on roads, pedestrian paths, trails, campuses, and commercial areas. Wayfinding also emphasizes local and regional brands, creates a sense of place, and encourages people to walk and bicycle for transportation by highlighting how easy it is to get to destinations. To create a successful wayfinding system, signs should be simple, consistent, and oriented to casual users and visitors.



Example of trail wayfinding signs for Northwest Illinois.



Signs in Clackamas County, Oregon incorporates regional and local logos to unify wayfinding countywide.

LETTERS OF SUPPORT



Toledo Design Collective
URBAN PLANNING & DESIGN

August 16, 2022

Lucas County Board of Commissioners
1 Government Center #800
Toledo, OH 43604

Dear Lucas County Commissioners,

The Toledo Design Collective is pleased to submit this letter of support for the Lucas County Active Transportation Plan. Lucas County ranks in the bottom 25% of counties in Ohio for overall health outcomes. Additionally, Lucas County is the only county to rank in the top five for both pedestrian and cycling crashes. While Lucas County may have several popular recreational trails, most are not connected to one another and do not allow for cycling to be an effective or efficient method of transportation.

By adopting the Active Transportation Plan, Lucas County would have a strategy to become an accessible community where people of all ages and abilities, including children, can conveniently, comfortably, affordably, and safely walk, cycle, or use public transit as part of their everyday travel behaviors. The proposed projects, such as the construction of 47 miles of shared use path, 11 miles of bicycle boulevards, educational programs, community engagement opportunities, data driven programs, and the implementation of numerous pedestrian safety treatments will work to make this goal possible.

Additionally, this Plan has the opportunity to build off existing City of Toledo City Council adopted neighborhood planning efforts, such as the 2018 Junction Neighborhood Master Plan and 2017 Old South End Master Plan. Both plans were championed by local neighborhood organizations and Toledo Design Collective helped facilitate the planning process. By having a community, and in this case region of engaged community members, the Lucas County Active Transportation Plan will ensure all users will have collective ownership of the proposed network of trails.

We fully support the adoption of the Lucas County Active Transportation Plan, as it would improve the health and safety, livability, equity, and sustainability of the county. This active transportation network, with uniform policy and design guidelines for the county, would result in a network that is safe and accessible for all users, no matter their age or ability.

Sincerely,

Elizabeth Ellis, *Studio Director*



August 12, 2022

Lucas County Board of Commissioners
1 Government Center #800
Toledo, OH 43604

Dear Lucas County Commissioners,

The American Institute of Architects

AIA Toledo
521 W. Woodruff Avenue
Toledo, Ohio 43604

T (419)255-7884

www.aia.org/toledo

AIA Toledo, a Chapter of the American Institute of Architects, is pleased to submit this letter of support for the Lucas County Active Transportation Plan. Lucas County ranks in the bottom 25% of counties in Ohio for overall health outcomes. Additionally, Lucas County is the only county to rank in the top five for both pedestrian and cycling crashes. While Lucas County may have several popular recreational trails, most are not connected to one another and do not allow for cycling to be an effective or efficient method of transportation. The challenges align with the purpose of licensure for architects—protecting the health, safety, and welfare of the public in the built environment.

By adopting the Active Transportation Plan, Lucas County would have a strategy to become an accessible community where people of all ages and abilities, including children, can conveniently, comfortably, affordably, and safely walk, cycle, or use public transit as part of their everyday travel. The proposed projects will work to make this goal possible. As an organization comprised of architects and related professions, AIA Toledo deeply understands the ways in which the built environment can affect physical activity and how having measurable goals creates high levels of success.

We support the adoption of the Lucas County Active Transportation Plan, as it would improve the health and safety, livability, equity, and sustainability of the county. This active transportation network, with uniform policy and design guidelines for the county as a whole, would result in a network that is safe and accessible for all users, no matter their age or ability.

Sincerely,

A handwritten signature in black ink that reads "Heather Judge".

Heather Judge, AIA
President, AIA Toledo
hjudge@ssoe.com



August 30, 2022

Dear Lucas County Commissioners:

Please be advised that the Broadway Corridor Coalition supports the Lucas County Active Transportation Plan. As you may know, the Broadway Corridor Coalition, Inc (BCC) is a nonprofit community organization focused on the Old South End of Toledo. The BCC plans and promotes community and economic development in a neighborhood with significant challenges. The BCC fosters a diverse, connected, and collaborative neighborhood through open and active leadership, communication, promotion, and support of, by and for its members, residents, businesses, organizations, and visitors to the area.

Lucas County ranks in the bottom twenty-five percent of counties in Ohio for overall health outcomes. Additionally, Lucas County is the only county to rank in the top five for both pedestrian and cycling crashes. While Lucas County may have several popular recreational trails, most are not connected to one another and do not allow for cycling to be an effective or efficient method of transportation.

By adopting the Active Transportation Plan, Lucas County would have a strategy to become an accessible community where people of all ages and abilities, including children, can conveniently, comfortably, affordably, and safely walk, cycle, or use public transit as part of their everyday travel behaviors. The proposed projects, such as the construction of 47 miles of shared use path, 11 miles of bicycle boulevards, educational programs, community engagement opportunities, data driven programs, and numerous pedestrian safety treatments will work to make this goal possible. The BCC is particularly interested in increasing the number of bike lanes.

We fully support the adoption of the Lucas County Active Transportation plan as it would be an asset to the county by improving the health and safety, livability, equity, and sustainability by creating an active transportation network that is safe and accessible for all users, no matter their age or ability.

Sincerely yours,

Steven B. Seaton

Steven B Seaton
President

PO Box 256, Toledo, Ohio 43697



CITY OF OPPORTUNITY

MICHAEL J. SEFERIAN, MAYOR
Phone: 419-698-7045
Fax: 419-691-0241
mseferian@oregonohio.org

CITY OF OREGON OHIO

5330 SEAMAN ROAD • OREGON, OH 43616-2608
www.ci.oregon.oh.us

MICHAEL J. BEAZLEY
City Administrator's Office
Phone: 419-698-7095
Fax: 419-690-7305
mbeazley@oregonohio.org

June 1, 2022

Lucas County Board of Commissioners
1 Government Center #800
Toledo, OH 43604

Dear Lucas County Commissioners:

The City of Oregon is pleased to submit this letter of support for the Lucas County Active Transportation Plan. Lucas County ranks in the bottom 25% of counties in Ohio for overall health outcomes. Additionally, Lucas County is the only county to rank in the top five for both pedestrian and cycling crashes. While Lucas County may have several popular recreational trails, most are not connected to one another and do not allow for cycling to be an effective or efficient method of transportation.

By adopting the Active Transportation Plan, Lucas County would have a strategy to become an accessible community where people of all ages and abilities, including children, can conveniently, comfortably, affordably, and safely walk, cycle, or use public transit as part of their everyday travel behaviors. The proposed projects, such as the construction of 47 miles of shared use path, 11 miles of bicycle boulevards, educational programs, community engagement opportunities, data driven programs, and the implementation of numerous pedestrian safety treatments will work to make this goal possible. We are particularly excited about the potential for additional trails in our region that can connect to the Oregon Bikeway System to provide our residents with biking opportunities outside of Oregon.

We fully support the adoption of the Lucas County Active Transportation Plan, as it would improve the health and safety, livability, equity, and sustainability of the county. This active transportation network, with uniform policy and design guidelines for the county as a whole, would result in a network that is safe and accessible for all users, no matter their age or ability.

Sincerely,

Michael J. Seferian
Mayor

Michael J. Beazley
City Administrator





OFFICE OF THE MAYOR

CRAIG A. STOUGH, MAYOR

July 21, 2022

Board of Lucas County Commissioners
One Government Center, Suite 800
Toledo, OH 43604

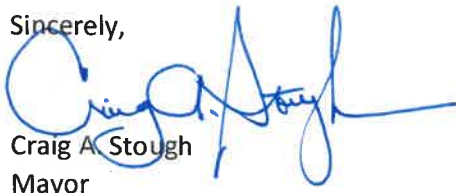
Dear Lucas County Commissioners,

The City of Sylvania is pleased to submit this letter of support for the Lucas County Active Transportation Plan. Lucas County ranks in the bottom 25% of counties in Ohio for overall health outcomes. Additionally, Lucas County is the only county to rank in the top five for both pedestrian and cycling crashes. While Lucas County may have several popular recreational trails, most are not connected to one another and do not allow for cycling to be an effective or efficient method of transportation.

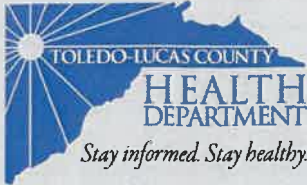
By adopting the Active Transportation Plan, Lucas County would have a strategy to become an accessible community where people of all ages and abilities, including children, can conveniently, comfortably, affordably, and safely walk, cycle, or use public transit as part of their everyday travel behaviors. The proposed projects, such as the construction of 47 miles of shared use path, 11 miles of bicycle boulevards, educational programs, community engagement opportunities, data driven programs, and the implementation of numerous pedestrian safety treatments will work to make this goal possible. We are particularly excited about the completion of the University/Parks Trail from Silica to Sylvan Prairie Park because it will enable our community to safely access all the wonderful parks and trails our City has to offer.

We fully support the adoption of the Lucas County Active Transportation Plan, as it would improve the health and safety, livability, equity, and sustainability of the county. This active transportation network, with uniform policy and design guidelines for the county as a whole, would result in a network that is safe and accessible for all users, no matter their age or ability.

Sincerely,



Craig A. Stough
Mayor



635 North Erie Street
Toledo, Ohio 43604-5317
419.213.4100
419.213.4017 Fax
boardofhealth@co.lucas.oh.us



Eric J. Zgodzinski, DrPH, MPH, RS, CPH
Health Commissioner

**LUCAS COUNTY
REGIONAL HEALTH DISTRICT
BOARD MEMBERS**

Ted Kaczorowski, President
David Karmol, Vice President
Amr Elaskary
Paul Komisarek
Richard L. Munk, MD
Susan Postal, EMT-P
Johnathon Ross, MD
Barbara Sarantou
Michelle Schultz
Jered Wilson, JD, MPA
Donna A Woodson, MD

**AN EQUAL OPPORTUNITY
EMPLOYER**

The Department operates in
accordance with Title VII of the
Civil Rights Act of 1964

Visit us on the web at:
www.lucascountyhealth.com

9/1/2022

Lucas County Board of Commissioners
1 Government Center #800
Toledo, OH 43604

Dear Lucas County Commissioners,

The Toledo-Lucas County Health Department is pleased to submit this letter of support for the Lucas County Active Transportation Plan. Lucas County ranks in the bottom 25% of counties in Ohio for overall health outcomes. Additionally, Lucas County is the only county to rank in the top five for both pedestrian and cycling crashes. While Lucas County may have several popular recreational trails, most are not connected to one another and do not allow for cycling to be an effective or efficient method of transportation.

By adopting the Active Transportation Plan, Lucas County would have a strategy to become an accessible community where people of all ages and abilities, including children, can conveniently, comfortably, affordably, and safely walk, cycle, or use public transit as part of their everyday travel behaviors. The proposed projects, such as the construction of 47 miles of shared use path, 11 miles of bicycle boulevards, educational programs, community engagement opportunities, data driven programs, and the implementation of numerous pedestrian safety treatments will work to make this goal possible. The Lucas County Active Transportation Plan aligns with the Toledo-Lucas County Health Department's mission and vision of promoting and protecting the health of all people where they live, learn, work and play making Lucas County healthier for everyone.

We fully support the adoption of the Lucas County Active Transportation Plan, as it would improve the health and safety, livability, equity, and sustainability of the county. This active transportation network, with uniform policy and design guidelines for the county as a whole, would result in a network that is safe and accessible for all users, no matter their age or ability.

Sincerely,

Eric J. Zgodzinski, DrPH, MPH,RS, CPH
Health Commissioner, Toledo-Lucas County Health Department



June 6, 2022

Lucas County Board of Commissioners
1 Government Center, #800
Toledo, OH 43604

Dear Lucas County Commissioners:

The Toledo Area Regional Transit Authority is pleased to submit this letter of support for the Lucas County Active Transportation Plan. Lucas County ranks in the bottom 25% of counties in Ohio for overall health outcomes. Additionally, Lucas County is the only county to rank in the top five for both pedestrian and cycling crashes. While Lucas County may have several popular recreational trails, most are not connected to one another and do not allow for cycling to be an effective or efficient method of transportation.

By adopting the Active Transportation Plan, Lucas County would have a strategy to become an accessible community where people of all ages and abilities, including children, can conveniently, comfortably, affordably, and safely walk, cycle, or use public transit as part of their everyday travel behaviors. The proposed projects, such as the construction of 47 miles of shared use path, 11 miles of bicycle boulevards, educational programs, community engagement opportunities, data driven programs, and the implementation of numerous pedestrian safety treatments will work to make this goal possible. TARTA is particularly excited about connecting people to where they want and need to go because equitable access is important for all.

We fully support the adoption of the Lucas County Active Transportation Plan, as it would improve the health and safety, livability, equity, and sustainability of the county. This active transportation network, with uniform policy and design guidelines for the County, and would result in a network that is safe and accessible for all users, no matter their age or ability.

Sincerely,

A handwritten signature in black ink, reading "Laura Koprowski", is written over a light gray signature line.

Laura Koprowski
Chief Executive Officer

1127 West Central Avenue, P.O. Box 792

Toledo, Ohio 43697-0792

P: 419.243.7433 | F: 419.243.8588

TARTA.COM



Toledo Metropolitan Area Council of Governments

300 Martin Luther King Jr. Drive Toledo, Ohio 43604

P.O. Box 9508 Toledo, OH 43697-9508

Phone 419.241.9155 Fax 419.241.9116 www.tmacog.org

August 10, 2022

Lucas County Board of Commissioners
1 Government Center #800
Toledo, OH 43604

Dear Commissioners,

The Toledo Metropolitan Area of Council of Governments (TMACOG) endorses the Lucas County Active Transportation Plan. This initiative is in accordance with the goals of TMACOG's Pedestrian & Bikeways Committee to provide for increased availability and promote usage of pedestrian and bicycle transportation within the region.

By adopting the Active Transportation Plan, Lucas County would have a strategy to become an accessible community where people of all ages and abilities, including children, can conveniently, comfortably, affordably, and safely walk, cycle, or use public transit as part of their everyday travel behaviors. The proposed projects, such as the construction of forty-seven miles of shared use path, eleven miles of bicycle boulevards, educational programs, community engagement opportunities, data driven programs, and the implementation of numerous pedestrian safety treatments will work to make this goal possible. This plan is consistent with TMACOG's planning efforts in our "On the Move: 2015-2045 - Update 2020" transportation plan.

TMACOG supports the adoption of the Lucas County Active Transportation Plan, as it would improve the health and safety, livability, equity, and sustainability of the county. The implementation of this plan will only make the Toledo metropolitan area a greater place to live, work, and play.

TMACOG is the metropolitan planning organization for northwestern Ohio and southeastern Michigan. Our transportation planning region includes Lucas and Wood counties in Ohio and southern three townships of Monroe County, Michigan. Together, our members work on transportation issues that affect quality of life for everyone in our region.

Sincerely,

David Gedeon, AICP
Vice President of Transportation, TMACOG

DG:LD:jc



**Administration Office
& Board of Education**

716 Askin Street
Maumee, Ohio 43537
419-893-3200
419-891-5387 fax
www.maumee.k12.oh.us

Steve Lee, Interim Superintendent
Matthew Dick, Interim
Assistant Superintendent
Paul E. Brotzki, Treasurer

Board of Education
Mike Wiley, President
Stephanie Piechowiak, Vice President
Diane Balcerzak
Matt Bush
Janet Wolff

**ENGAGE
INSPIRE
EMPOWER**

August 30, 2022

Lucas County Board of Commissioners
1 Government Center #800
Toledo, OH 43604

Dear Lucas County Commissioners,

The Maumee City Schools is pleased to submit this letter of support for the Lucas County Active Transportation Plan. Lucas County ranks in the bottom 25% of counties in Ohio for overall health outcomes. Additionally, Lucas County is the only county to rank in the top five for both pedestrian and cycling crashes. While Lucas County may have several popular recreational trails, most are not connected to one another and do not allow for cycling to be an effective or efficient method of transportation.

By adopting the Active Transportation Plan, Lucas County would have a strategy to become an accessible community where people of all ages and abilities, including children, can conveniently, comfortably, affordably, and safely walk, cycle, or use public transit as part of their everyday travel behaviors. The proposed projects, such as the construction of 47 miles of shared use path, 11 miles of bicycle boulevards, educational programs, community engagement opportunities, data driven programs, and the implementation of numerous pedestrian safety treatments will work to make this goal possible. We are particularly excited about the increased shared use paths, bicycle boulevards, and educational programs, because they will give our families more and safer options when deciding how their students will get to and from school.

We fully support the adoption of the Lucas County Active Transportation Plan, as it would improve the health and safety, livability, equity, and sustainability of the county. This active transportation network, with uniform policy and design guidelines for the county as a whole, would result in a network that is safe and accessible for all users, no matter their age or ability.

Sincerely,

Steve Lee
Maumee City schools Interim Superintendent



**METROPARKS
TOLEDO**

6/1/2022

Lucas County Board of Commissioners
1 Government Center #800
Toledo, OH 43604

Dear Lucas County Commissioners,

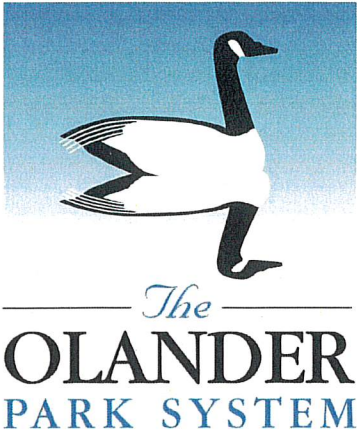
Metroparks Toledo is pleased to submit this letter of support for the Lucas County Active Transportation Plan. Lucas County ranks in the bottom 25% of counties in Ohio for overall health outcomes. Additionally, Lucas County is the only county to rank in the top five for both pedestrian and cycling crashes.

By adopting the Active Transportation Plan, Lucas County would have a strategy to become an accessible community where people of all ages and abilities, including children, can conveniently, comfortably, affordably, and safely walk, cycle, or use public transit as part of their everyday travel behaviors. The proposed projects, such as the construction of 47 miles of shared use path, 11 miles of bicycle boulevards, educational programs, community engagement opportunities, data driven programs, and the implementation of numerous pedestrian safety treatments will work to make this goal possible. We are particularly excited about working with community partners to advance plans for improved regional connectivity through a trail network across Lucas County. Sections of the trail network are already in place and this plan will further efforts to coordinate the development and secure the funding the make these projects a reality.

We fully support the adoption of the Lucas County Active Transportation Plan, as it would improve the health and safety, livability, equity, and sustainability of the county.

Sincerely,

Dave Zenk
Executive Director



6930 Sylvania Ave
Sylvania, OH 43560

419.882.8313
www.olanderpark.com
info@olanderpark.com

Commissioners
Dale Theis, Chair
Sandy Luetke
Scott Smith

Executive Director
Erika Buri

July 22, 2022

Dear Lucas County Commissioners,

The Olander Park System is pleased to submit this letter of support for the Lucas County Active Transportation Plan. Lucas County ranks in the bottom 25% of counties in Ohio for overall health outcomes. Additionally, Lucas County is the only county to rank in the top five for both pedestrian and cycling crashes. While Lucas County may have several popular recreational trails, most are not connected to one another and do not allow for cycling to be an effective or efficient method of transportation.

By adopting the Active Transportation Plan, Lucas County would have a strategy to become an accessible community where people of all ages and abilities, including children, can conveniently, comfortably, affordably, and safely walk, cycle, or use public transit as part of their everyday travel behaviors. The proposed projects, such as the construction of 47 miles of shared use path, 11 miles of bicycle boulevards, educational programs, community engagement opportunities, data driven programs, and the implementation of numerous pedestrian safety treatments will work to make this goal possible.

TOPS is particularly excited about the ability of this plan to assist efforts in our community to provide more opportunities for active transportation. In particular, TOPS plans to connect the University Parks trail to our Quarry Ridge Bike trail, and regional cooperation on this type of infrastructure will help us complete this, and other potential projects.

We fully support the adoption of the Lucas County Active Transportation Plan, as it would improve the health and safety, livability, equity, and sustainability of the county. This active transportation network, with uniform policy and design guidelines for the county as a whole, would result in a network that is safe and accessible for all users, no matter their age or ability.

Sincerely,

Erika Buri
Executive Director
The Olander Park System

June 1, 2022

Lucas County Board of Commissioners
1 Government Center #800
Toledo, OH 43604

Dear Lucas County Commissioners,

ProMedica is pleased to submit this letter of support for the Lucas County Active Transportation Plan. Lucas County ranks in the bottom 25% of counties in Ohio for overall health outcomes. Additionally, Lucas County is the only county to rank in the top five for both pedestrian and cycling crashes. While Lucas County may have several popular recreational trails, most are not connected to one another and do not allow for cycling to be an effective or efficient method of transportation.

By adopting the Active Transportation Plan, Lucas County would have a strategy to become an accessible community where people of all ages and abilities, including children, can conveniently, comfortably, affordably, and safely walk, cycle, or use public transit as part of their everyday travel behaviors. The proposed projects, such as the construction of 47 miles of shared use path, 11 miles of bicycle boulevards, educational programs, community engagement opportunities, data driven programs, and the implementation of numerous pedestrian safety treatments will work to make this goal possible. ProMedica's Russell J. Ebeid Children's Hospital serves as the lead agency for Safe Kids Greater Toledo, and we coordinate and conduct bicycle and pedestrian safety activities with community partners throughout Lucas County.

We fully support the adoption of the Lucas County Active Transportation Plan, as it would improve the health and safety, livability, equity, and sustainability of the county. This active transportation network, with uniform policy and design guidelines for the county as a whole, would result in a network that is safe and accessible for all users, no matter their age or ability.
Sincerely,

Sincerely,



Randy Oostra
Chief Executive Officer

Toledo Bikes Incorporated

1114 Washington St
Toledo OH 43604-5820

ToledoBikes.org | 419-386-6090

Primary Objectives & Purposes

- *To promote safe bicycle transportation among the general public,*
 - *Provide education on bicycle maintenance and safety,*
 - *Make reused and recycled bicycles available to the community, including those who could not otherwise afford one.*
-

August 11, 2022

Lucas County Board of Commissioners
1 Government Center #800
Toledo, OH 43604

Dear Commissioners Wozniak, Gerken, and Byers.

The Board of Directors for Toledo Bikes Incorporated is pleased to submit this letter of support for the Lucas County Active Transportation Plan. Lucas County ranks in the bottom 25% of counties in Ohio for overall health outcomes. Additionally, Lucas County is the only county to rank in the top five for both pedestrian and cycling crashes. While Lucas County may have several popular recreational trails, most are not connected and do not allow for cycling to be an effective or efficient method of transportation.

By adopting the Active Transportation Plan, Lucas County would have a strategy to become an accessible community where people of all ages and abilities, including children, can conveniently, comfortably, affordably, and safely walk, cycle, or use public transit in their everyday travel behaviors.

The proposed projects such as the construction of 47 miles of shared use path, 11 miles of bicycle boulevards, educational programs, community engagement opportunities, data-driven programs, and the implementation of numerous pedestrian safety treatments will work to make this goal possible.

Our board membership fully supports the adoption of the Lucas County Active Transportation Plan, as it would improve the health and safety, livability, equity, and sustainability of the county.

This active transportation network, with uniform policy and design guidelines for the county as a whole, would result in a network that is safe and accessible for all users, no matter their age or ability.

Sincerely,



Steve Atkinson
Board President

419-699-8831
hello@toledobikes.org



Connecting Community



Toledo Public Schools
Office of the CEO/Superintendent
Toledo Public Schools Educational Campus
1609 N. Summit St. • Toledo, OH 43604

Dr. Romules L. Durant
CEO/Superintendent
419-671-0500
rdurant@tps.org

June 21, 2022

Lucas County Board of Commissioners
1 Government Center #800
Toledo, OH 43604

Dear Lucas County Board Commissioners:

The Toledo Public School District is pleased to submit this letter of support for the Lucas County Active Transportation Plan. Lucas County ranks in the bottom 25% of counties in Ohio for overall health outcomes. Additionally, Lucas County is the only county to rank in the top five for both pedestrian and cycling crashes. While Lucas County may have several popular recreational trails, most are not connected to one another and do not allow for cycling to be an effective or efficient method of transportation.

By adopting the Active Transportation Plan, Lucas County would have a strategy to become an accessible community where people of all ages and abilities, including children, can conveniently, comfortably, affordably, and safely walk, cycle, or use public transit as part of their everyday travel behaviors. The proposed projects, such as the construction of 47 miles of shared use path, 11 miles of bicycle boulevards, educational programs, community engagement opportunities, data driven programs, and the implementation of numerous pedestrian safety treatments will work to make this goal possible. We are particularly excited about the recommendations that will improve the overall wellness of our students traveling to and from school.

We fully support the adoption of the Lucas County Active Transportation Plan, as it would improve the health and safety, livability, equity, and sustainability of the county. This active transportation network, with uniform policy and design guidelines for the county as a whole, would result in a network that is safe and accessible for all users, no matter their age or ability.

Sincerely,

A handwritten signature in black ink, appearing to read 'Romules Durant', written over a white background.

Dr. Romules Durant
CEO/Superintendent
Toledo Public Schools



WHITEHOUSE · OHIO

OFFICE OF ADMINISTRATION

Jordan D. Daugherty
Administrator

MAYOR

DONALD L. ATKINSON

COUNCIL

LOUANN ARTIAGA
RICHARD BINGHAM
REBECCA CONKLIN KLEIBOEMER
MINDY CURRY
ROBERT KEOGH
WILLIAM MAY

August 9, 2022

Dear Lucas County Commissioners,

The Village of Whitehouse is pleased to submit this letter of support for the Lucas County Active Transportation Plan (LCATP). Lucas County ranks in the bottom 25% of counties in Ohio for overall health outcomes. Additionally, Lucas County is the only county to rank in the top five for both pedestrian and cycling crashes. While Lucas County may have several popular recreational trails, most are not connected to one another and do not allow for cycling to be an effective or efficient method of transportation.

By adopting the LCATP, Lucas County would have a strategy to become an accessible community where people of all ages and abilities, including children, can conveniently, comfortably, affordably, and safely walk, cycle, or use public transit as part of their everyday travel behaviors. The proposed projects, such as the construction of 47 miles of shared use path, 11 miles of bicycle boulevards, educational programs, community engagement opportunities, data driven programs, and the implementation of numerous pedestrian safety treatments will work to make this goal possible. I am particularly excited about the accessibility features as this supports the Village's new initiative to improve adult mental health. As research suggests active lifestyles are correlated with mental well-being, the LCATP is a welcomed plan that will improve the lives on many within our town.

I fully support the adoption of the LCATP, as it would improve the health and safety, livability, equity, and sustainability of the county. This active transportation network, with uniform policy and design guidelines for the county as a whole, would result in a network that is safe and accessible for all users, no matter their age or ability.

Sincerely,

Dr. Jordan D. Daugherty
Village Administrator



June 17, 2022

Lucas County Board of Commissioners
1 Government Center #800
Toledo, OH 43604

Dear Lucas County Board Commissioners,

The Washington Local School District is pleased to submit this letter of support for the Lucas County Active Transportation Plan. Lucas County ranks in the bottom 25% of counties in Ohio for overall health outcomes. Additionally, Lucas County is the only county to rank in the top five for both pedestrian and cycling crashes. While Lucas County may have several popular recreational trails, most are not connected to one another and do not allow for cycling to be an effective or efficient method of transportation.

By adopting the Active Transportation Plan, Lucas County would have a strategy to become an accessible community where people of all ages and abilities, including children, can conveniently, comfortably, affordably, and safely walk, cycle, or use public transit as part of their everyday travel behaviors. The proposed projects, such as the construction of 47 miles of shared use path, 11 miles of bicycle boulevards, educational programs, community engagement opportunities, data driven programs, and the implementation of numerous pedestrian safety treatments will work to make this goal possible. We are particularly excited about the recommendations that will improve the overall wellness of our students traveling to and from school.

We fully support the adoption of the Lucas County Active Transportation Plan, as it would improve the health and safety, livability, equity, and sustainability of the county. This active transportation network, with uniform policy and design guidelines for the county as a whole, would result in a network that is safe and accessible for all users, no matter their age or ability.

Sincerely,

Kadee Anstadt, Ed.D.
Superintendent

EVERY STUDENT MATTERS; EVERY MOMENT COUNTS.

ADDRESS
3505 W. Lincolnshire Blvd
Toledo, OH 43606

PHONE
(419) 473-8251

WEBSITE
wls4kids.org



July 25, 2022

Lucas County Commissioners
One Government Center, Suite 800
Toledo, Ohio 43604

Dear Lucas County Commissioners:

On behalf of the Mayor and City Council, I am pleased to submit this letter of support for the Lucas County Active Transportation Plan. As you are aware, Lucas County ranks in the bottom 25% of counties in Ohio for overall health outcomes. Additionally, Lucas County is the only county to rank in the top five for both pedestrian and cycling crashes. While Lucas County may have several popular recreational trails, most are not connected to one another and do not allow for cycling to be an effective or efficient method of transportation.

By adopting the Active Transportation Plan, Lucas County would have a strategy to become an accessible community where people of all ages and abilities, including children, can conveniently, comfortably, affordably, and safely walk, cycle, or use public transit as part of their everyday travel behaviors. The proposed projects, such as the construction of 47 miles of shared use path, 11 miles of bicycle boulevards, educational programs, community engagement opportunities, data driven programs, and the implementation of numerous pedestrian safety treatments will work to make this goal possible. In 2024, the City of Waterville will utilize \$396,000 in federal funding to add 1.1 miles of new pedestrian shared use paths to connect all of the City's existing shared use paths and eliminate all existing dead ends to help support Lucas County's program goals.

At their July 25, 2022 public meeting, the Mayor and the Waterville City Council endorsed the adoption of the Lucas County Active Transportation Plan, as it would improve the health and safety, livability, equity, and sustainability of the county. This active transportation network, with uniform policy and design guidelines for the county as a whole, would result in a network that is safe and accessible for all users, no matter their age or ability.

Sincerely,

A handwritten signature in blue ink, which appears to read "Jon Gochenour".

Jon Gochenour
Municipal Administrator

City of Waterville

25 North Second Street • Waterville, Ohio 43566-1491 • 419-878-8100 • Fax 419-878-8044 • www.waterville.org

RESOLUTION NO 002-2023

A RESOLUTION SUPPORTING THE LUCAS COUNTY ACTIVE TRANSPORTATION PLAN

WHEREAS, The Lucas County Active Transportation Plan was created under the leadership of a Steering Committee, as well as a broad coalition of people over the past several years, which ensured that it represented the variety of interests and stakeholders in Lucas County.

WHEREAS, The planning process commenced in 2017 when a team from Lucas County attended the Action Institute, a two-day training and networking opportunity for Ohio cities, counties, or regions interested in making their communities safer and more accessible for walking, cycling, and transit. A Steering Committee led by Live Well Greater Toledo and the Toledo-Lucas County Health Department has helped develop the plan through regular meetings, community outreach, and working with an outside consultant; and

WHEREAS, The vision and plan goals as developed are for an accessible community where people of all ages and abilities, including children, can conveniently, comfortably, affordably, and safely walk, cycle, or use public transit as part of their everyday travel behaviors. The plan has four goal categories: Health & Safety (Encourage the development of a safe and context-appropriate bikeway and pedestrian system for all users in Lucas County including special populations), Livability (Create a framework for a comprehensive, community-driven, transportation network for all users of all ages), Equity (Create a more accessible community for all through development of interconnected pedestrian and bicycle facilities) and Sustainability (Reduce per capita energy consumption and promote alternative fuel resources to increase affordability and resilience of regional energy supplies.)

WHEREAS, The project team collected community input online through a public survey, interactive mapping tool, and in-person tabling events at the TARTA transit center and county libraries. Early engagement identified key barriers to walking and cycling, which defined areas of focus for the planning process; and

WHEREAS, the approval and support of the Plan by the City will assist in supporting future funding applications and opportunities for the City of Maumee, County, and other interested parties, to develop components of the Plan, which will provide many community benefits beyond personal mobility, such as improved public health, economic development, greater quality of life, and enhanced environmental quality.; and

WHEREAS, municipalities in Lucas County continue to plan and develop active transportation infrastructure to:

- Create safe and green transportation routes,
- Promote healthy lifestyles,
- Invigorate the sense of community,
- Promote economic diversity and vitality,
- Improve air quality,
- Relieve motorized traffic congestion,
- Improve the efficiency of transportation infrastructure,
- Decrease dependency on carbon fuels, and
- Reduce the burden of infrastructure maintenance

WHEREAS, this council finds and determines that it is in the best interests of the residents of the City and the other political subdivisions of the County to support the Plan developed by the Steering Committee.

Now, therefore, be it resolved by the Council of the City of Maumee, Lucas County, State of Ohio as follows:

Section 1. This Council approves and endorses the Lucas County Active Transportation Plan and its objectives, dated December 22, 2022, a copy of which Plan is on file with the City of Maumee.

Section 2. This Council finds and determines that all formal actions of this Council and any of its Committees concerning and relating to the passage of this Resolution were taken in an open meeting of this Council or

Committees, and that all deliberations of this Council and any of its committees that resulted in those formal actions were in meetings open to the public, in compliance with the law.

Section 3. This Resolution shall take effect and be in force from and after the earliest period allowed by law.




Mayor.

ATTEST:



Municipal Clerk.

Approved as to form by:



Law Director.

Passed: January 17, 2023

CERTIFICATE OF POSTING

I, Clerk of Council of the Municipality of Maumee, Ohio, do hereby certify that Ordinance/Resolution No. 002-2023 was duly posted on 1-18-23 and remained posted for a period of fifteen days thereafter, in not less than five of the most public places in the municipality as determined by the Council of said Municipality.



Clerk of Council

Date: 2-2-23